

SAN MATEO COUNTY
COMMUNITY
COLLEGE DISTRICT

FACILITIES PLANNING,
MAINTENANCE & OPERATIONS

Capital Improvement Program Phase 3(CIP3)

APRIL 16, 2019



College of San Mateo



Agenda

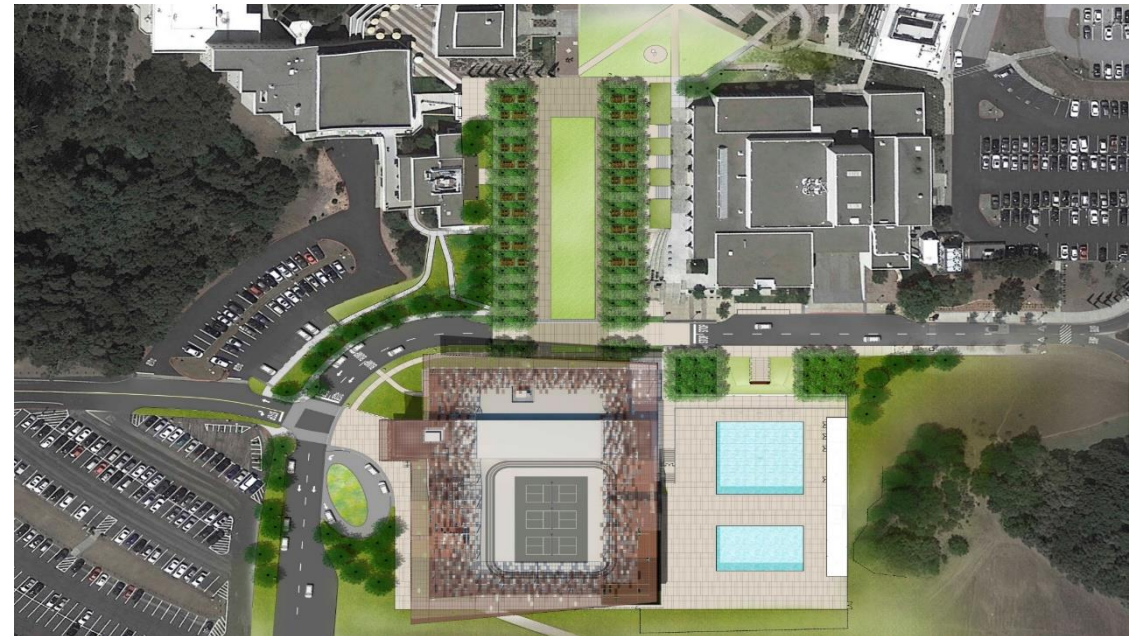
- Four Major Projects Updates
- Economic Market Conditions
- Q & A

CAN B1N – Kinesiology & Wellness Center

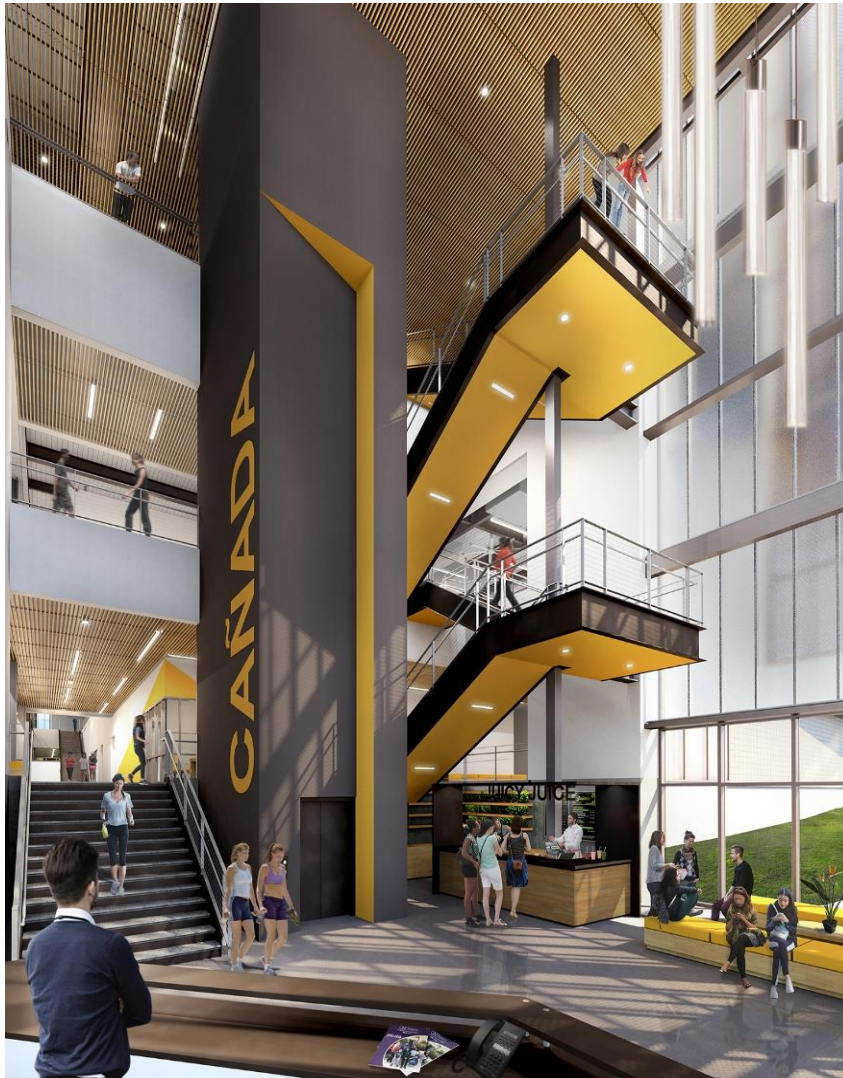


CAN B1N – Aerial View

CAN B1N – Bird's Eye View

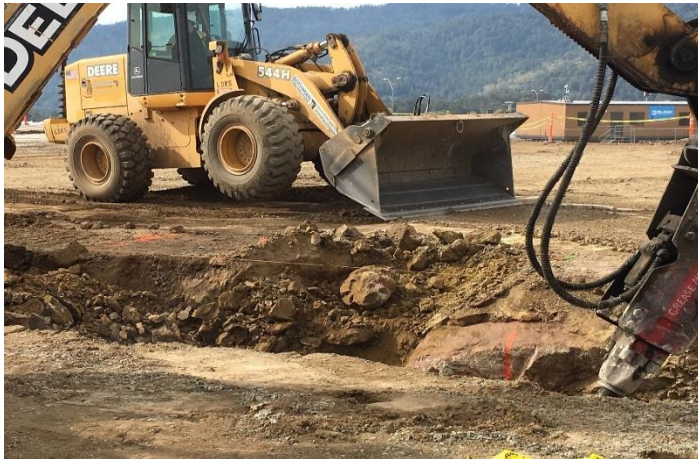
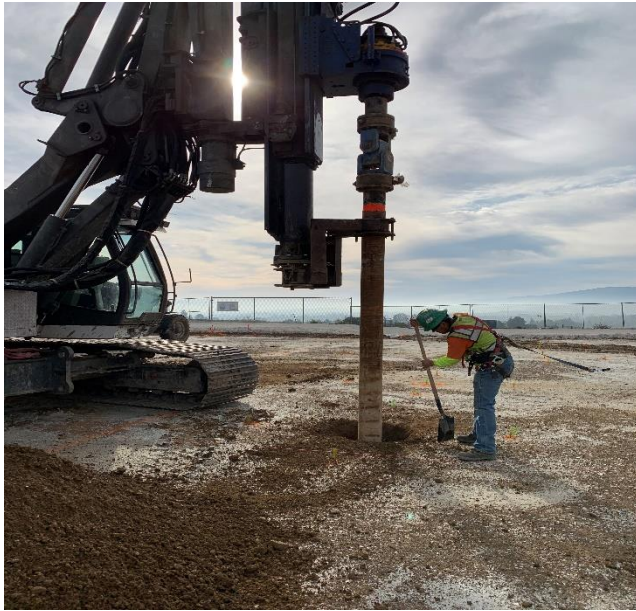


CAN B1N – Kinesiology & Wellness Center



"FACILITIES EXCELLENCE"

CAN B1N – Kinesiology & Wellness Center



CAN B23N – Science & Technology



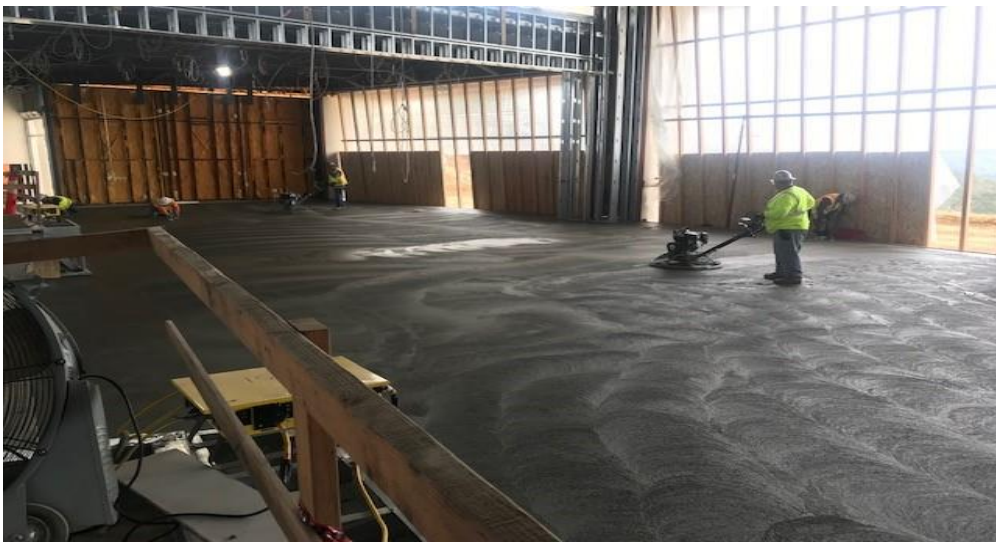
CAN B23N – Science & Technology



SKY B12N – Environmental Science



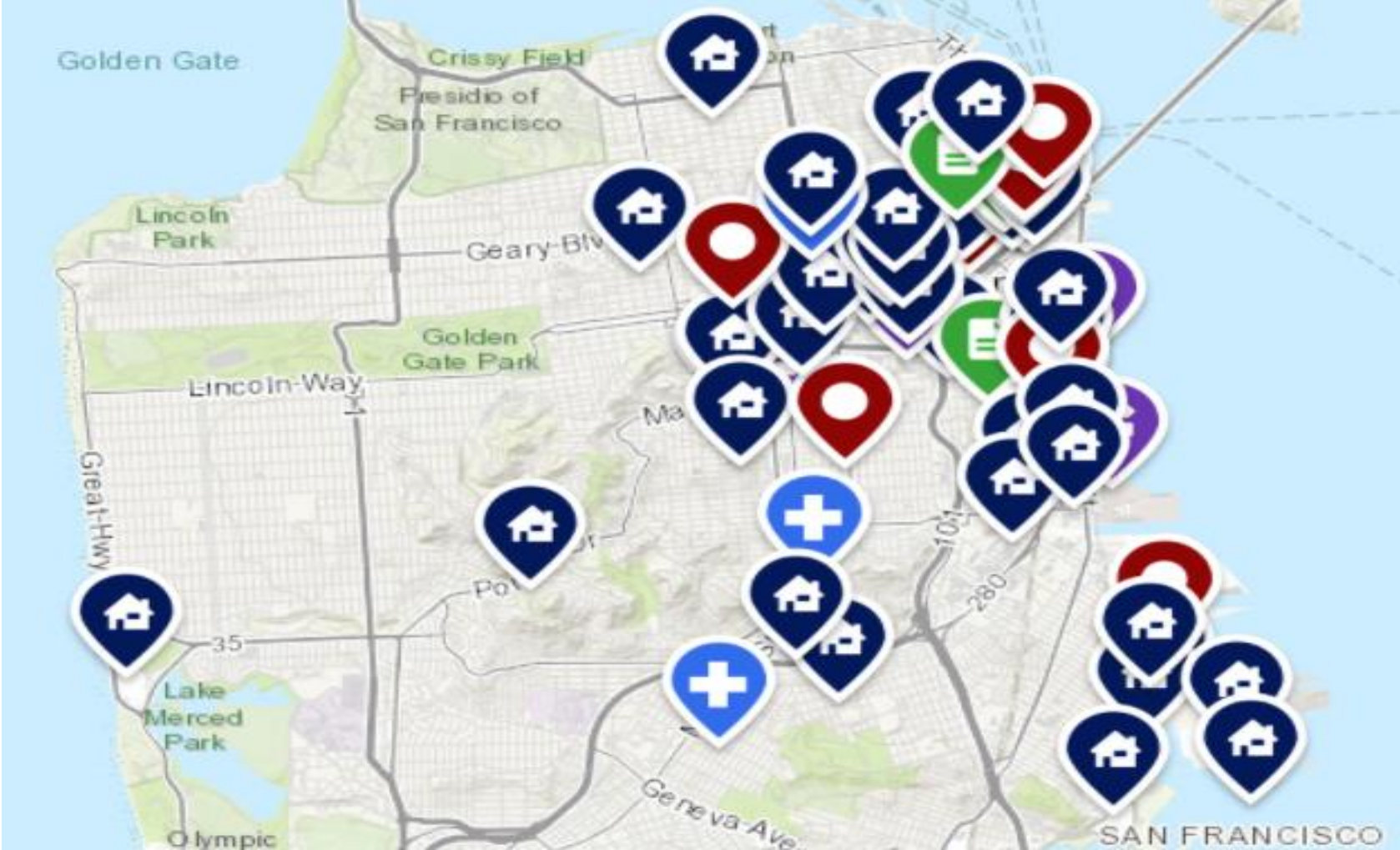
SKY B12N – Environmental Science



SKY B1N – Creative Arts & Social Sciences



Over \$50 Billion Under Construction in SF

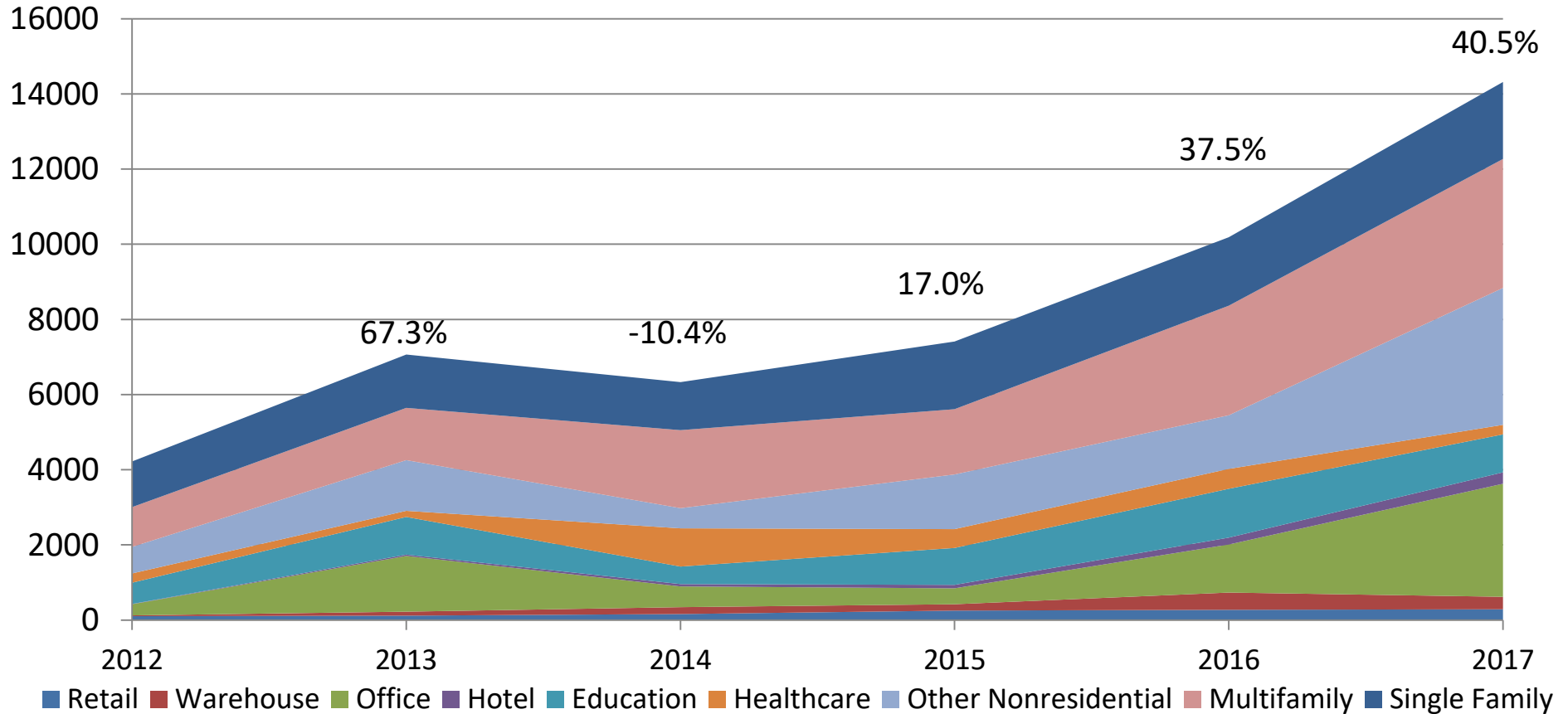


Market Activities

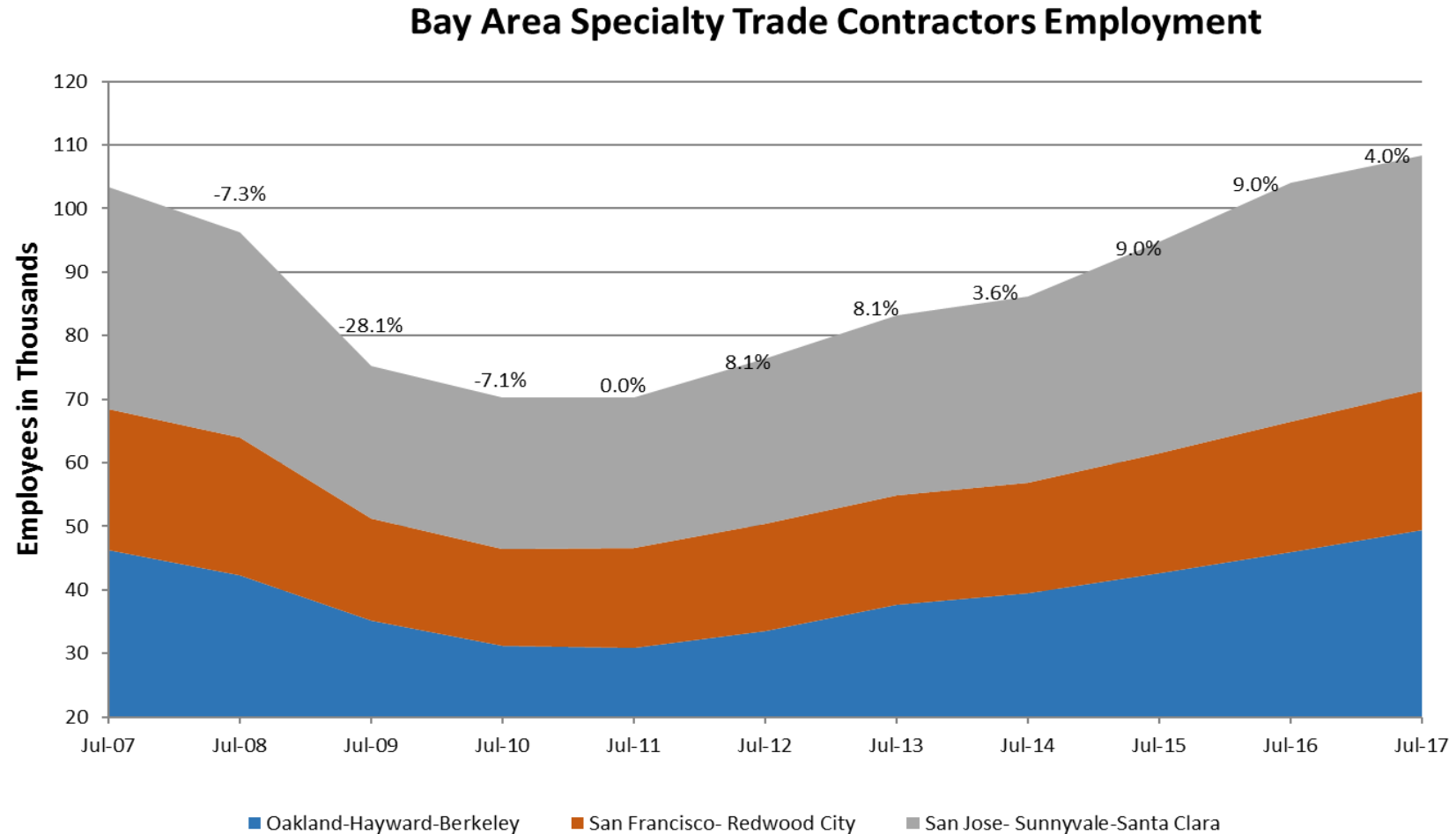
San Francisco Bay Area
Construction Starts (mil \$) Per Year

**Bay Area
Volume up
40% in
2017.

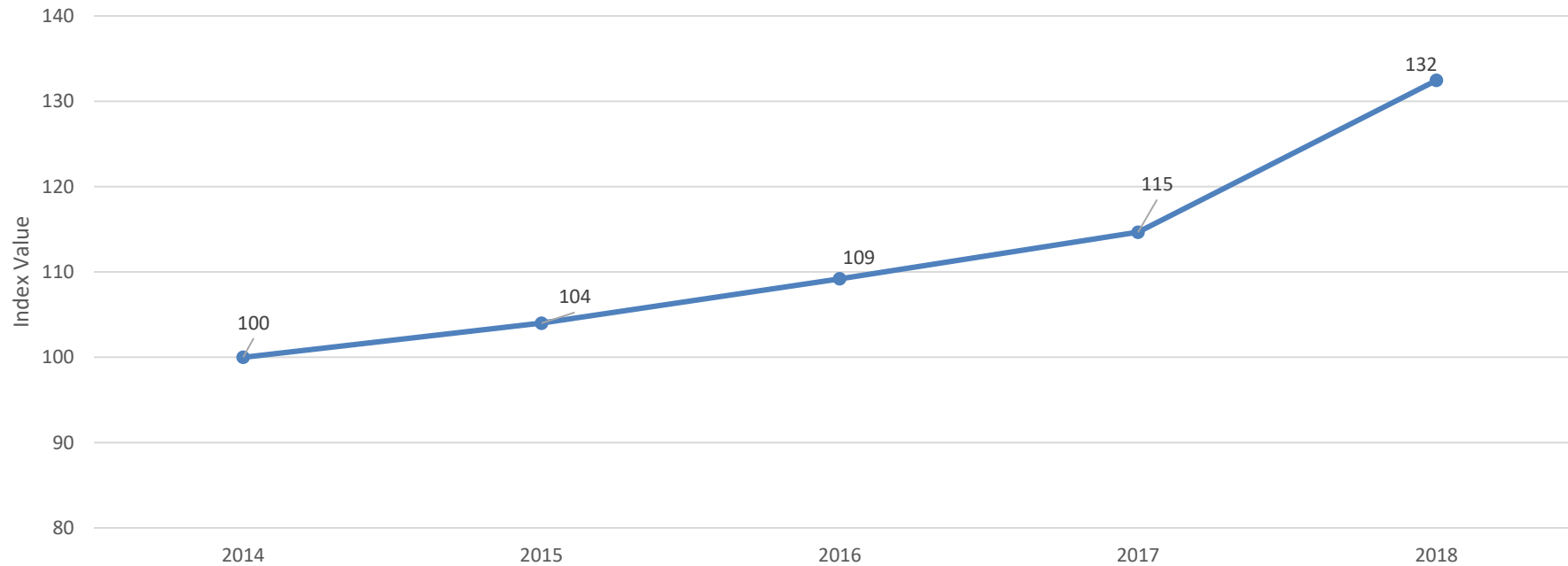
Over 350%
increase
since
2012.**



Specialty Trade Employment up 54% since 2011



Construction Costs up 32.4% since 2014



Historic escalation average is 3%

Current Market Factor: 10% *

Cumulative cost increase since 2014: 32.4%

***Market factor is the premium the market is paying currently for labor shortages, decreased productivity and lack of competition seen throughout the Bay Area**

Price Differential without Competitive Bidding

- Number of Bids

- 1 bid

- 2-3 bids

- 4-5 bids

- 6-7 bids

- 8-10 bids

% Differential

+25% to 50%

+10% to 25%

0% to +10%

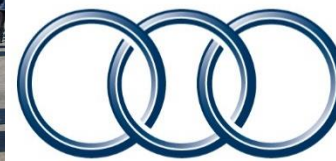
0% to -10%

-10% to -20%

Current Cost Risks

- Rising costs due to increasing wages and contractor margins
- Decreasing competition - Contractor's Market
- Shortages in mechanical/electrical/plumbing (MEP)
- Severe shortages in major supply chains
- Ongoing escalation for multi-year programs

Questions and Answers



**SAN MATEO COUNTY
COMMUNITY
COLLEGE DISTRICT**

Cañada College • College of San Mateo • Skyline College