



2020 Fall Enrollment

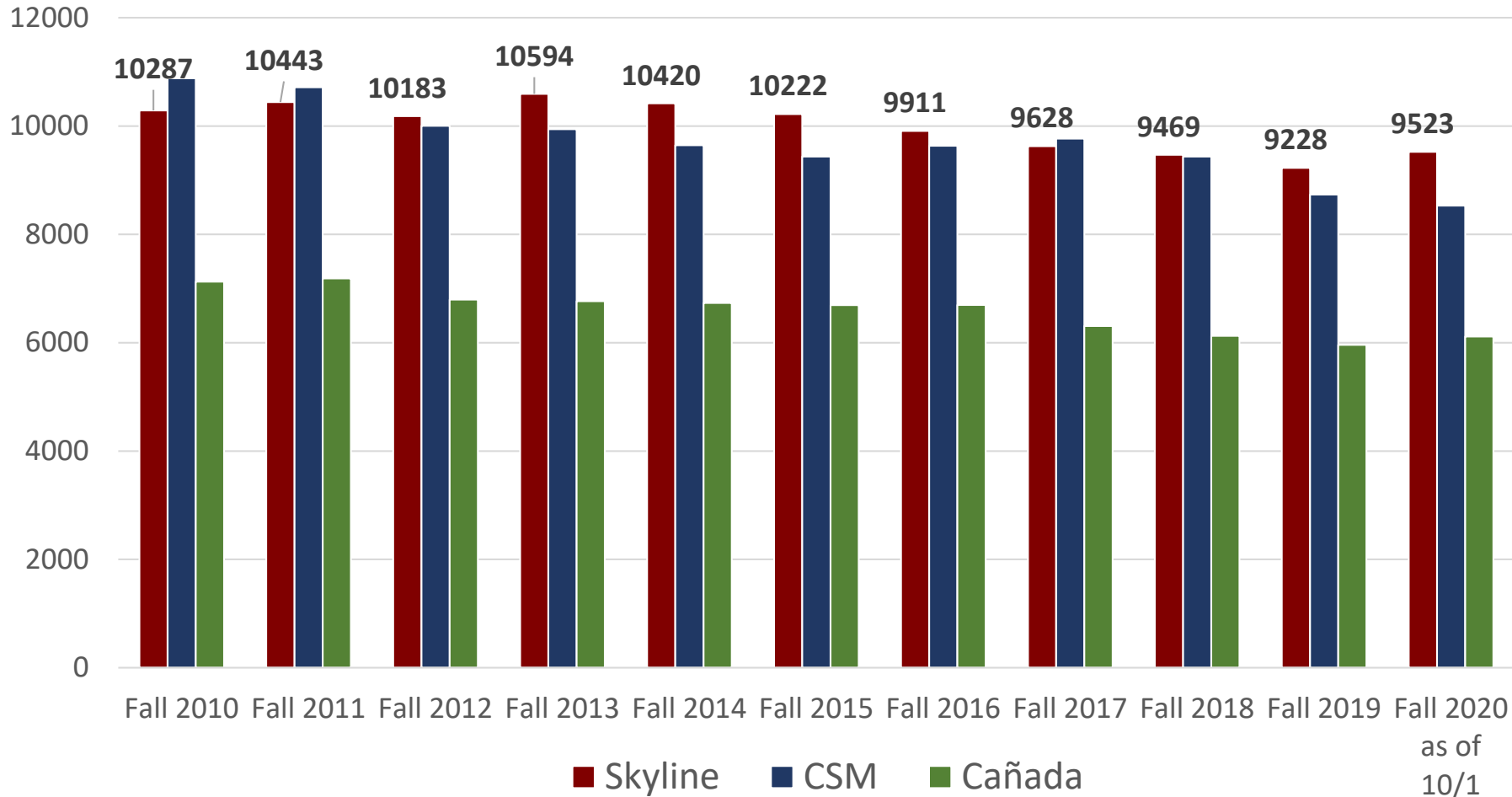
Update as of October 1, 2020

Skyline College PRIE

Office of Planning, Research, and Institutional Effectiveness

Increase in Skyline College student headcount compared with fall 2019

Student Headcounts at SMCCCD Colleges



**Year to Year change,
Fall 2019 to Fall 2020**

Skyline headcount is **up 3.2%**

CSM headcount is **down -2.3%**

Cañada headcount is **up 2.6%**

SMCCCD headcount is
down 7.2%

Skyline College FTES declined 11.9% from Fall 2019 to Fall 2020

Year to Year change,
Fall 2019 to Fall 2020

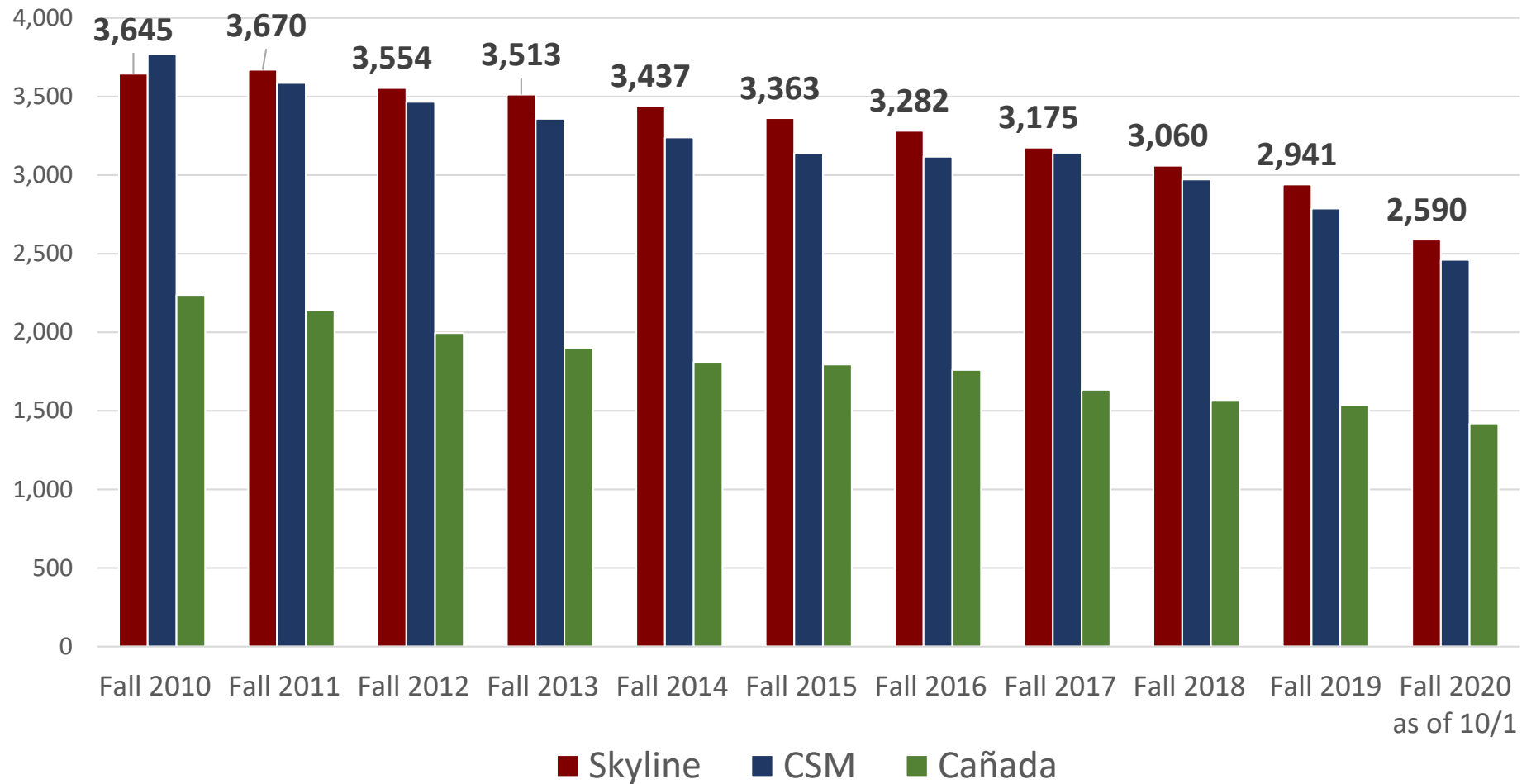
Skyline FTES are **down 11.9%**

CSM FTES are **down 11.7%**

Cañada FTES are **down 7.2%**

SMCCCD FTES are
down 10.9%

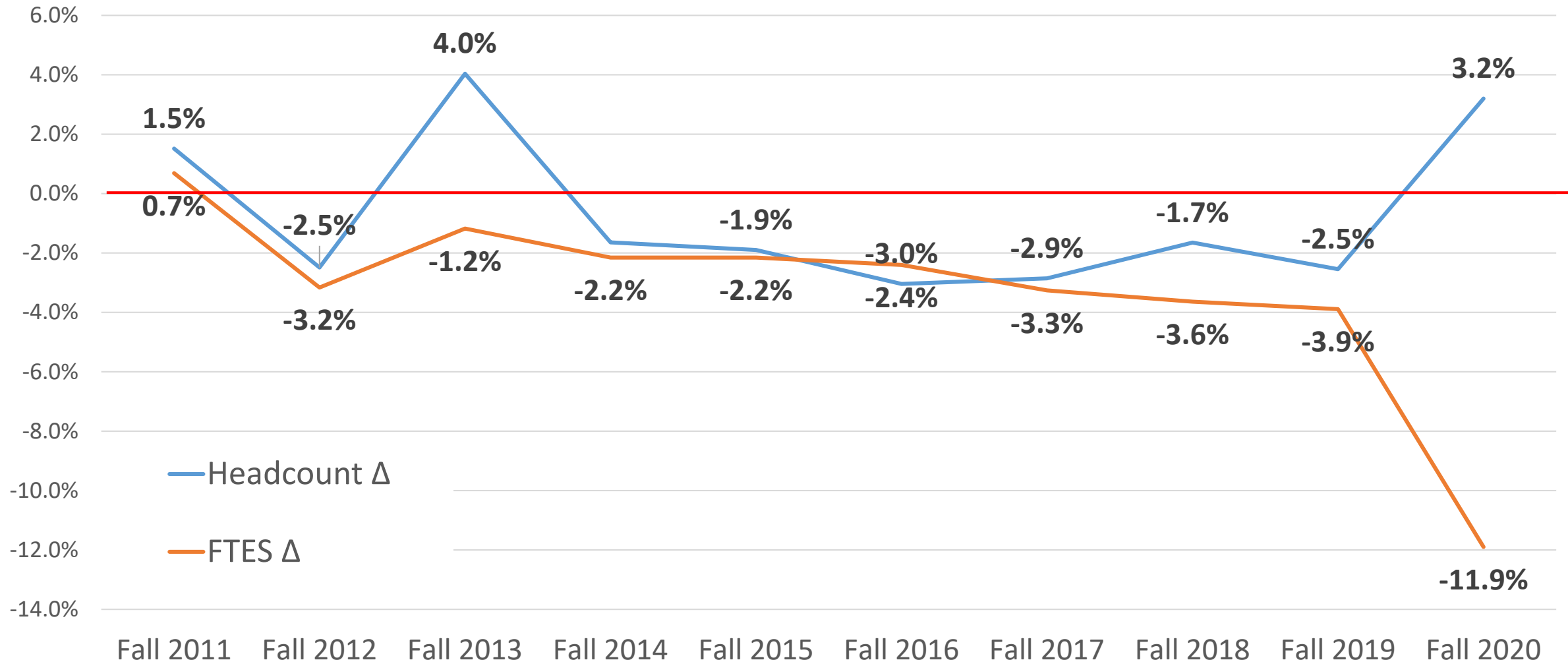
Full-Time Equivalent Students (FTES) at SMCCCD Colleges



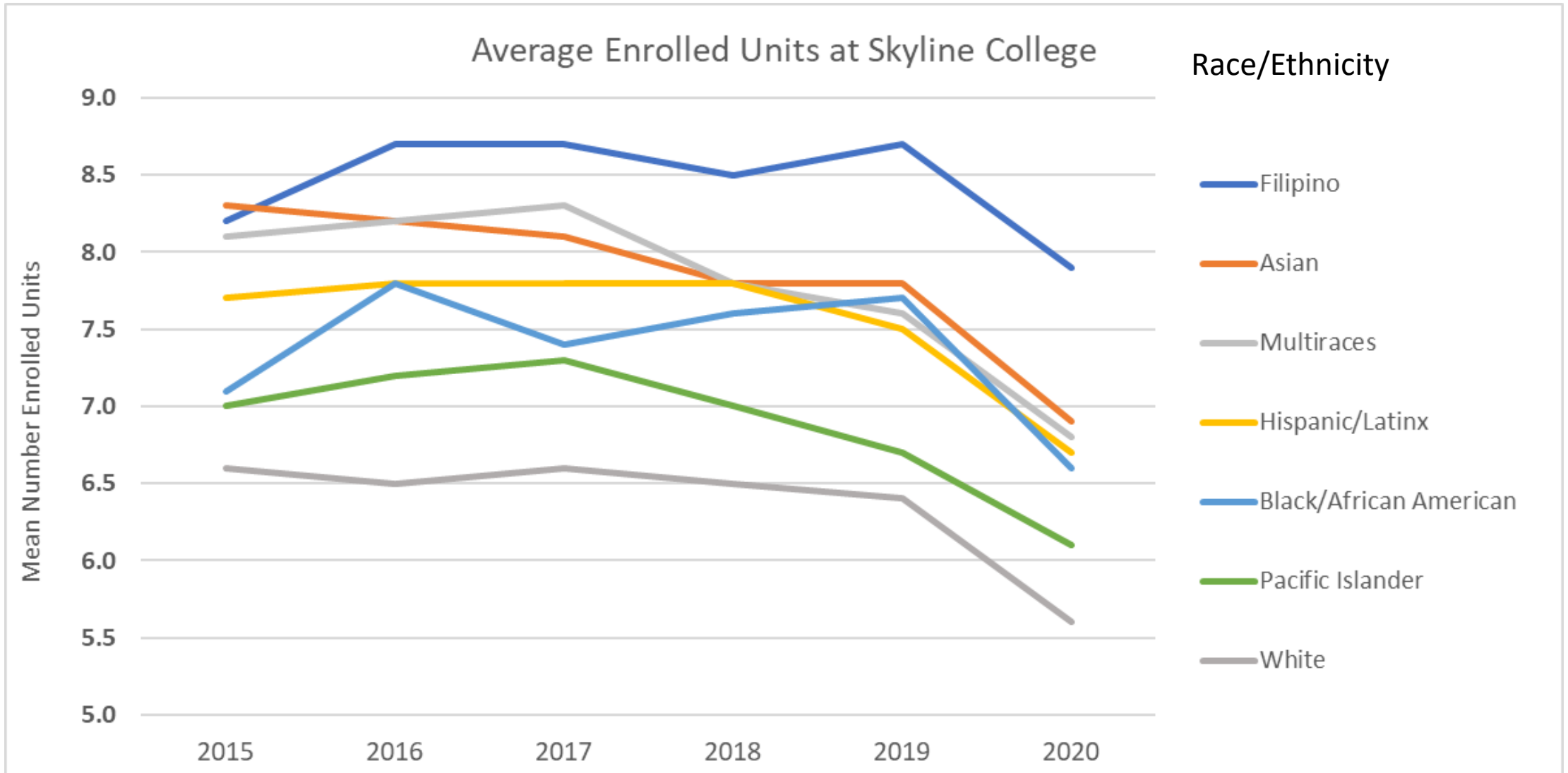
Source: SMCCCD Efficiency and Productivity Report, 10/1/2020

12% Decline in Skyline FTES is a highly unusual – Especially coupled with an increase in student headcount

Rate of Change in Student Headcounts and FTES



Students across all race/ethnic groups are enrolled in fewer courses/units, on average



COVID Impact on Skyline College Enrollment

FTES & Enrollment decline

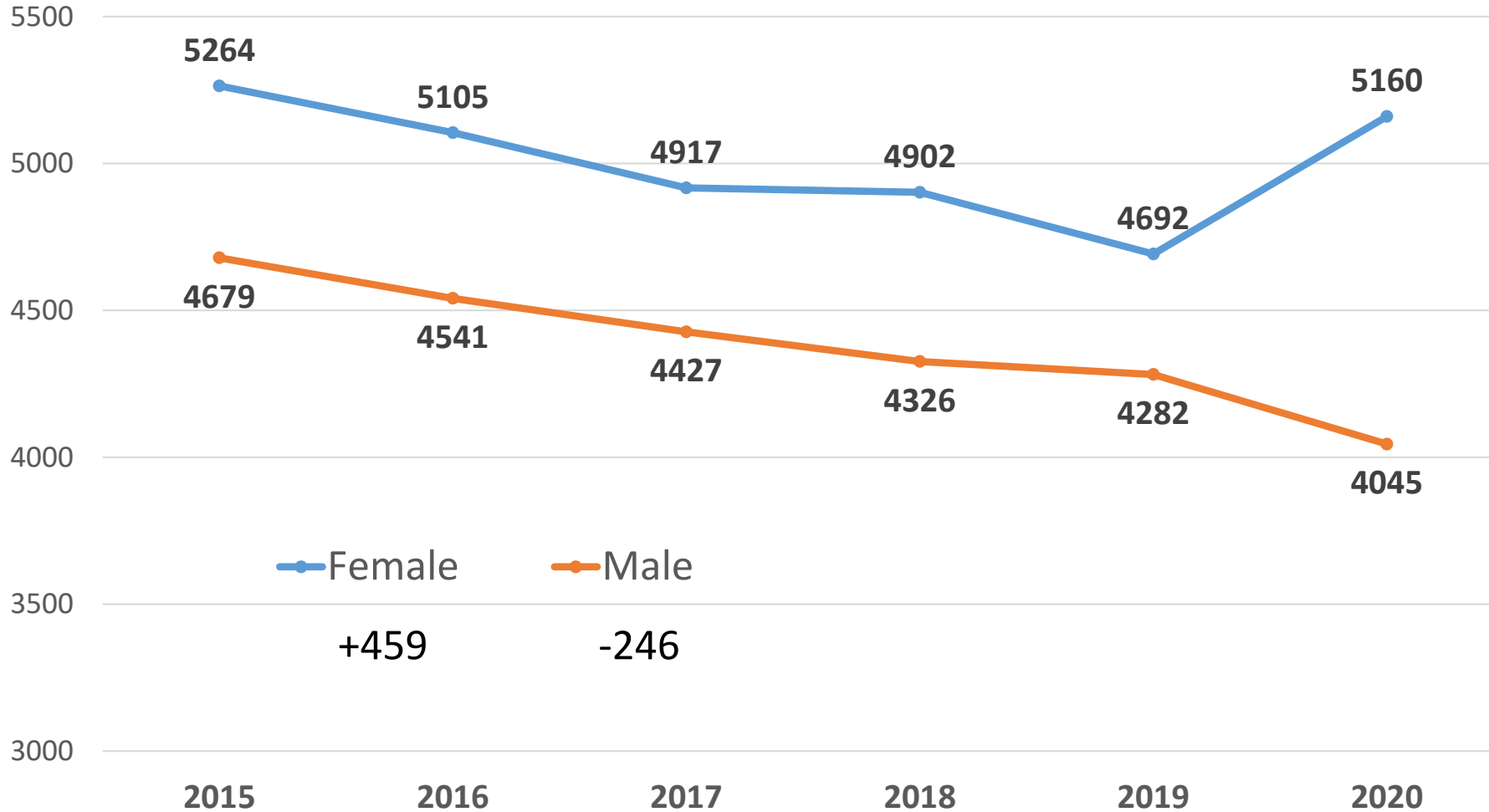
- Students are taking fewer courses, on average

Changes in student demographics

- Major demographic and geographic shifts

Covid-19 impact on enrollment of male and female students

Fall Student Headcount, by Gender



Similar Unit Load Declines

Fall 2020	Avg Units	1 Year change
Female Students	6.5	-9.7%
Male Students	7.1	-9.0%

Fall 2019 to Fall 2020 Changes in Demographic Composition of Student Body

Decline in headcounts:

- Male students ↓ 6% (-246)
- Filipino students ↓ 4% (-69)
- International students ↓ 28% (-71)
- Students aged 35+ yrs ↓ 13% (-158)
- Continuing students ↓ 5% (-287)

Increase in headcounts:

- Female students ↑ 10% (+459)
- White students ↑ 7% (+120)
- Asian students ↑ 8% (+126)
- Students aged 30-34 yrs ↑ 14% (+82)
- High School students ↑ 29% (+303)
- Returning students ↑ 17% (+170)
- 4yr College student ↑ 30% (+60)

Changes from Fall 2019 to Fall 2020.

Source: Skyline College Point in Time Detail Report, 10/1/2020

Fall 2019 to Fall 2020 Changes in Student City of Residence

Decline in headcounts:

- Daly City ↓ 12% (-246)
- South San Francisco ↓ 12% (-199)
- Pacifica ↓ 17% (-128)
- San Bruno ↓ 6% (-52)
- Hayward ↓ 19% (-15)
- San Francisco ↓ 2% (-18)

Increase in headcounts:

- San Mateo ↑ 45% (+319)
- Redwood City ↑ 61% (+145)
- Burlingame ↑ 43% (+75)
- Millbrae ↑ 18% (+59)
- San Carlos ↑ 49% (+43)
- Menlo Park ↑ 103% (+30)
- San Jose ↑ 43% (+24)
- Palo Alto ↑ 32% (+23)

Changes from Fall 2019 to Fall 2020.

Source: Skyline College Point in Time Detail Report, 10/1/2020