

President's
Return to Campus
Final Briefing #5

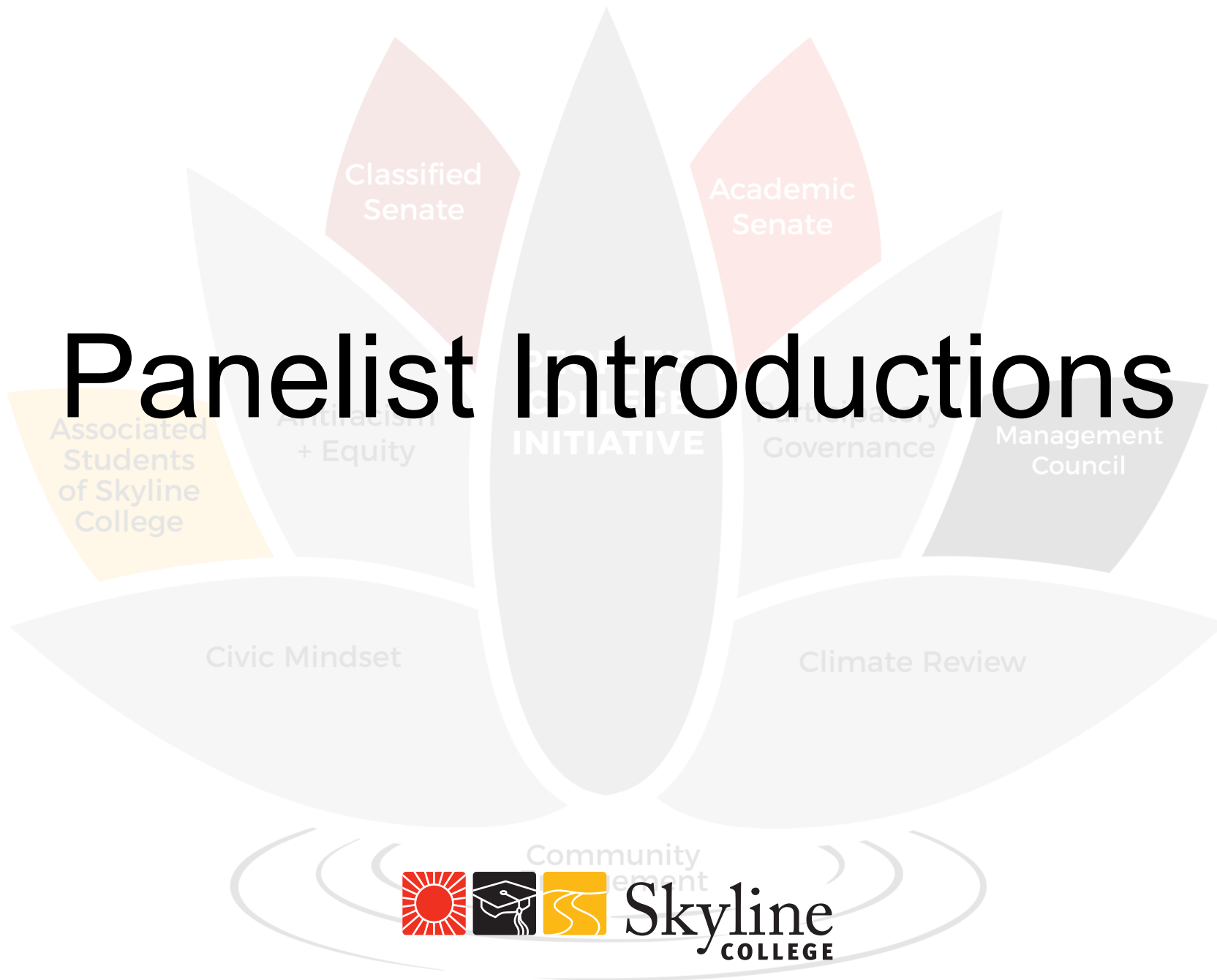
Spring 2022



Agenda

- Panelist Introductions
- President's Opening Comments
- Updates from our District Experts
 - Flexible Work Schedules
 - Variants, Vaccines and Masks
- Updates from Skyline College VPI and VPSS
- Q & A

Panelist Introductions



President's Opening Comments

Classified
Senate

Academic
Senate

Associated
Students
of Skyline
College

Civic Mindset

Climate Review



Community
Development
Skyline
COLLEGE

Return to Work Briefings #1, #2, #3, #4

- Previous Briefings Posted Here:
<https://skylinecollege.edu/presidentsoffice/return-to-campus.php>
- Q & A
 - Questions answered live (please watch the video)
 - Remaining questions are posted in a pdf

Excellent Resource!

District “Return to Campus” Website

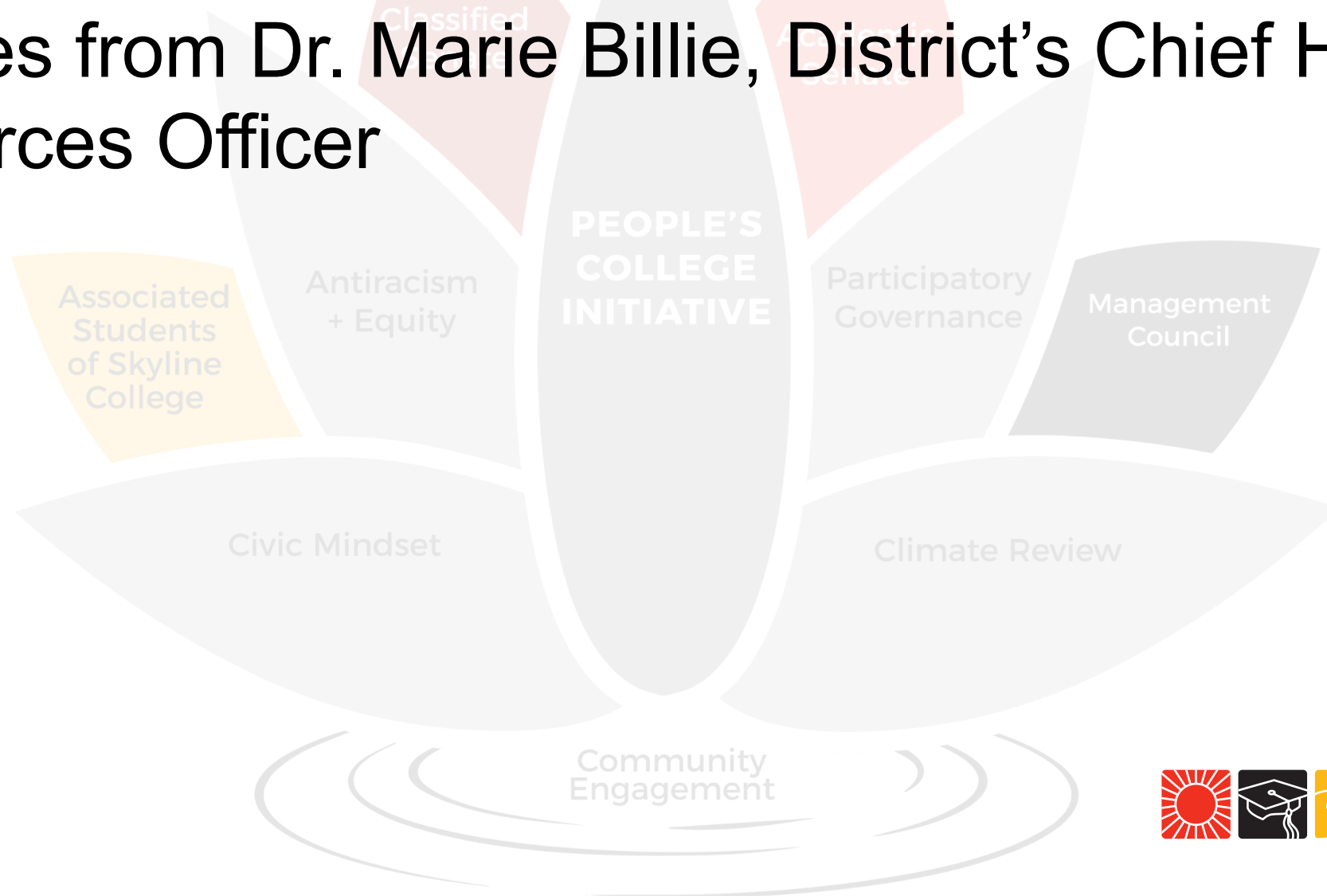
<https://smccd.edu/return-to-campus/index.php>

What does “we are back” mean?

- Administrators, Managers and Classified Professionals are to return to campus with their “normal” work schedule of 37.5 hours per week
- Services will be available in-person to students Monday through Friday
- Flexible schedules for Spring ‘22 are upon request & approval using HR process now available and **Due December 17**. Flexible schedules made for Fall ‘21 expire December 31, 2021.

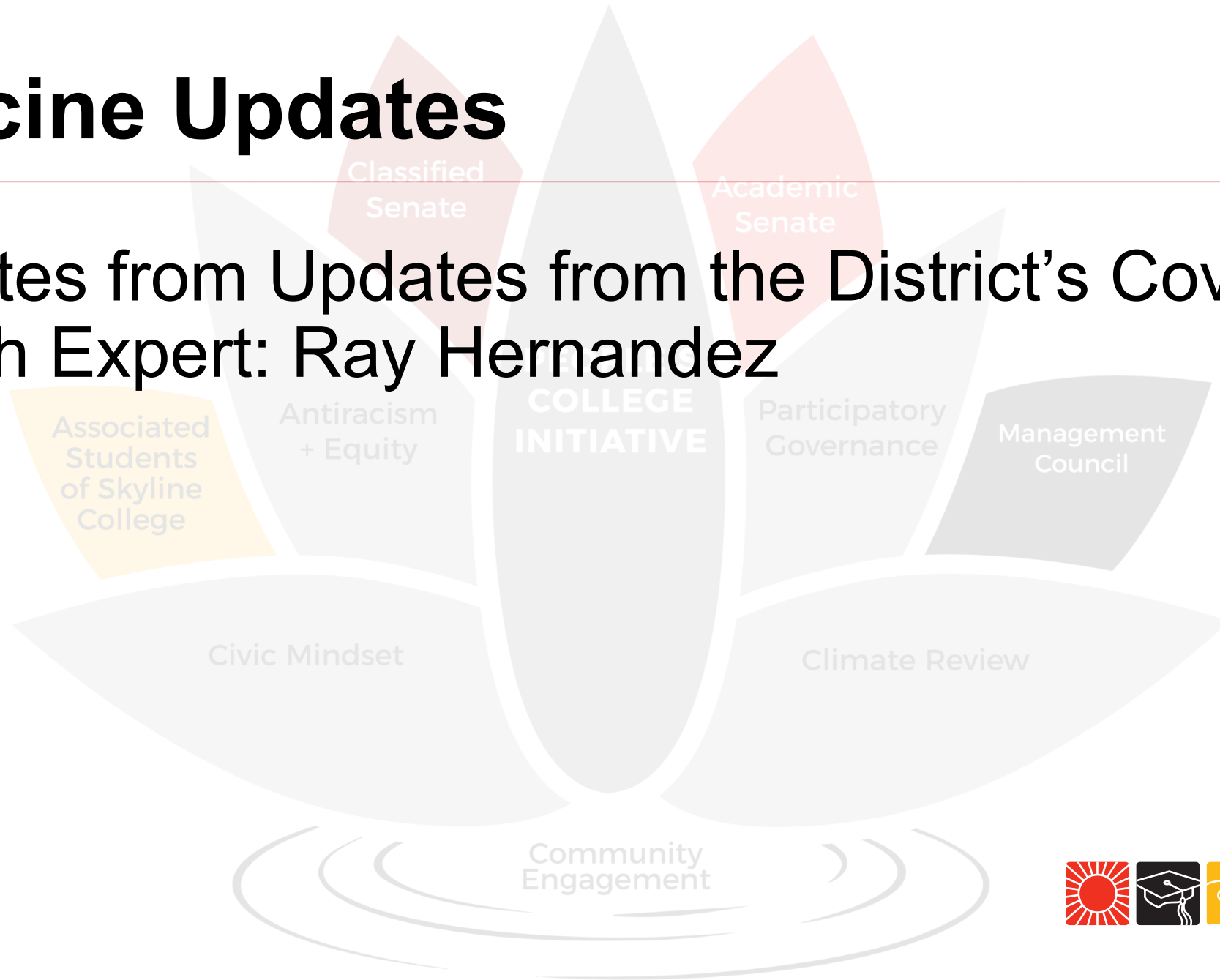
Human Resources Update

Updates from Dr. Marie Billie, District's Chief Human Resources Officer



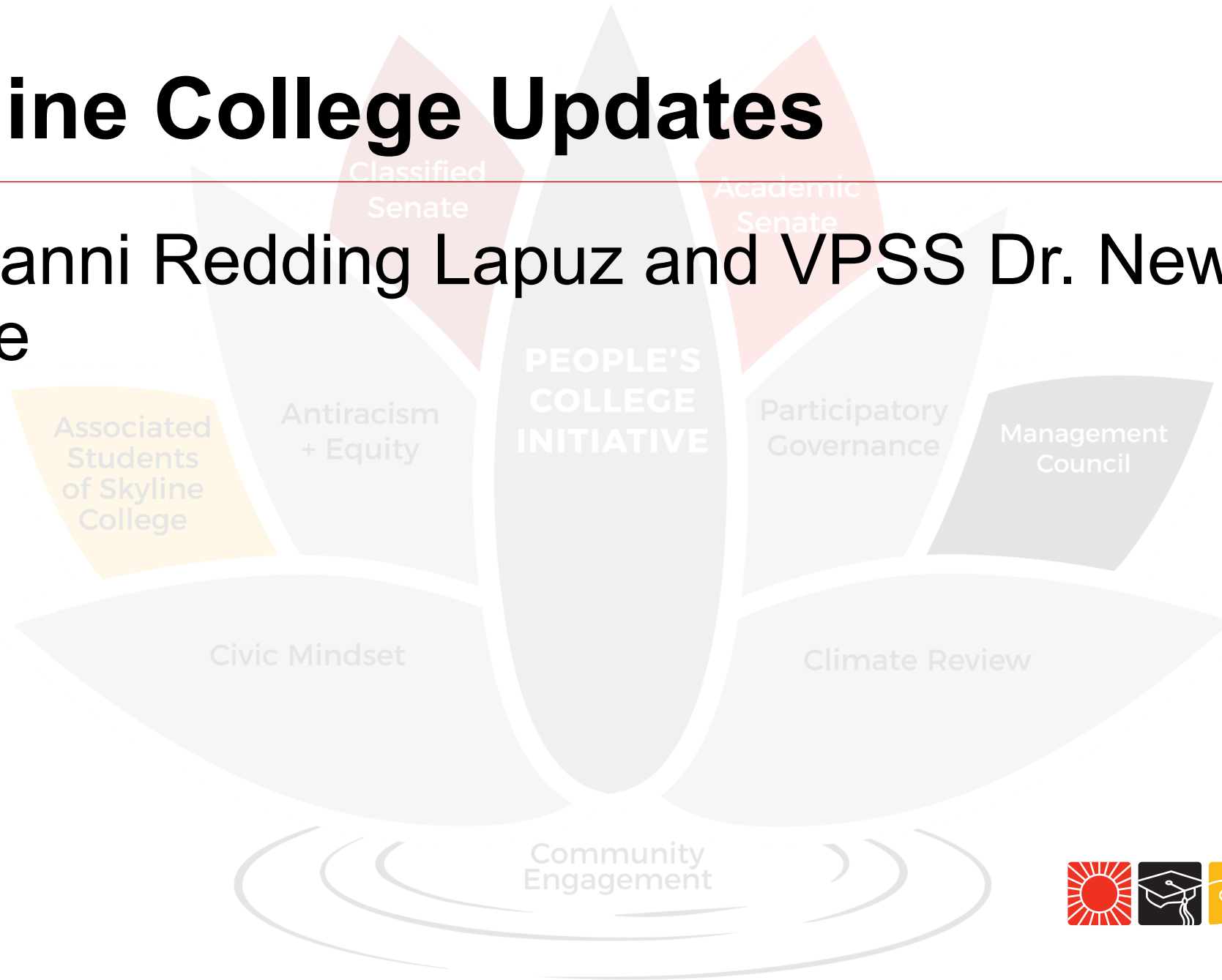
Vaccine Updates

Updates from Updates from the District's Covid-19 Health Expert: Ray Hernandez



Skyline College Updates

VPI Danni Redding Lapuz and VPSS Dr. Newin Orante





Classified Senate

Academic Senate

Q & A

with full panel

Associated Students of Skyline College

Antiracism

SKYLINE COLLEGE INITIATIVE

Participatory Governance

Management Council

Civic Mindset

Climate Review



Recurring Briefings are Complete!

