

## META MAJORS & GUIDED PATHWAYS

HERE'S WHAT YOU NEED TO KNOW:

### ABOUT META MAJORS

- Meta Majors organize all the degrees and certificates at Skyline College into four categories.
- These categories, or Meta Majors, provide a starting point for students who don't know what they want to study to find a major that's right for them.
- These categories allow students to use their interests as guides when selecting a major.



#### Arts, Languages & Communication

COSMETOLOGY	MEDIA ARTS
DIGITAL FILMMAKING	PERFORMING ARTS
INTERDISCIPLINARY STUDIES	VISUAL ART
LANGUAGES	



#### Business, Entrepreneurship & Management

ACCOUNTING	INTERNATIONAL BUSINESS & SUPPLY CHAIN MANAGEMENT
BUSINESS ADMINISTRATION	RETAIL & HOSPITALITY
COSMETOLOGY	TECHNOLOGY RELATED BUSINESS
ENTREPRENEURSHIP	



#### Science, Technology & Health

AUTO	MATH
BIOLOGICAL SCIENCES	MEDICAL, HEALTH & WELLNESS
INTERDISCIPLINARY STUDIES	PHYSICAL SCIENCES
KINESIOLOGY	TECHNOLOGY & ENGINEERING



#### Society & Education

EARLY CHILDHOOD EDUCATION	LAW
HISTORY & CULTURAL STUDIES	PHYSICAL EDUCATION
INTERDISCIPLINARY STUDIES	SOCIAL & BEHAVIORAL SCIENCES

### How will students interact with Meta Majors?

Students will encounter the Meta Majors at various parts of the enrollment process, including orientation, working with their counselor, and browsing for a major online.

Students will be able to narrow down their degree search by selecting a Meta Major first, then selecting an area of interest within their Meta Major, and finally selecting a specific individual major.

Counselors will also use the Meta Major website to work with students to help them select a major.

Once a student chooses their specific major, they will use their guided pathways to complete the degree requirements of that degree or certificate.

### How did this work get completed?

The Meta Majors are launching after extensive user testing, inquiry and hard work by faculty and staff. This work is designed to help improve the graduation rate, which hovers at about 14% for first time, full-time students over 3 years, and varies greatly across different student populations – meta majors are intended to raise this statistic by streamlining major selection.

Over the last two years, the Design Team has facilitated workshops, flex day activities, campus forums, campus-wide division meetings, work team meetings, and student focus groups that have laid the foundation for the Meta Major work.

# ABOUT GUIDED PATHWAYS

Guided pathways support students in declaring a major, encouraging them to connect their studies to careers, and providing simple and clear requirements to finish their education. Guided pathways solve a common community college problem: too many programs with unclear completion tracks that inevitably lead to students taking more time, spending more money, and taking more classes than necessary. By mapping the way through programs, we optimize time and money so students can finish college.

Most students will interact with Guided Pathways on the Guided Pathways website: [skylinecollege.edu/guidedpathways](http://skylinecollege.edu/guidedpathways)

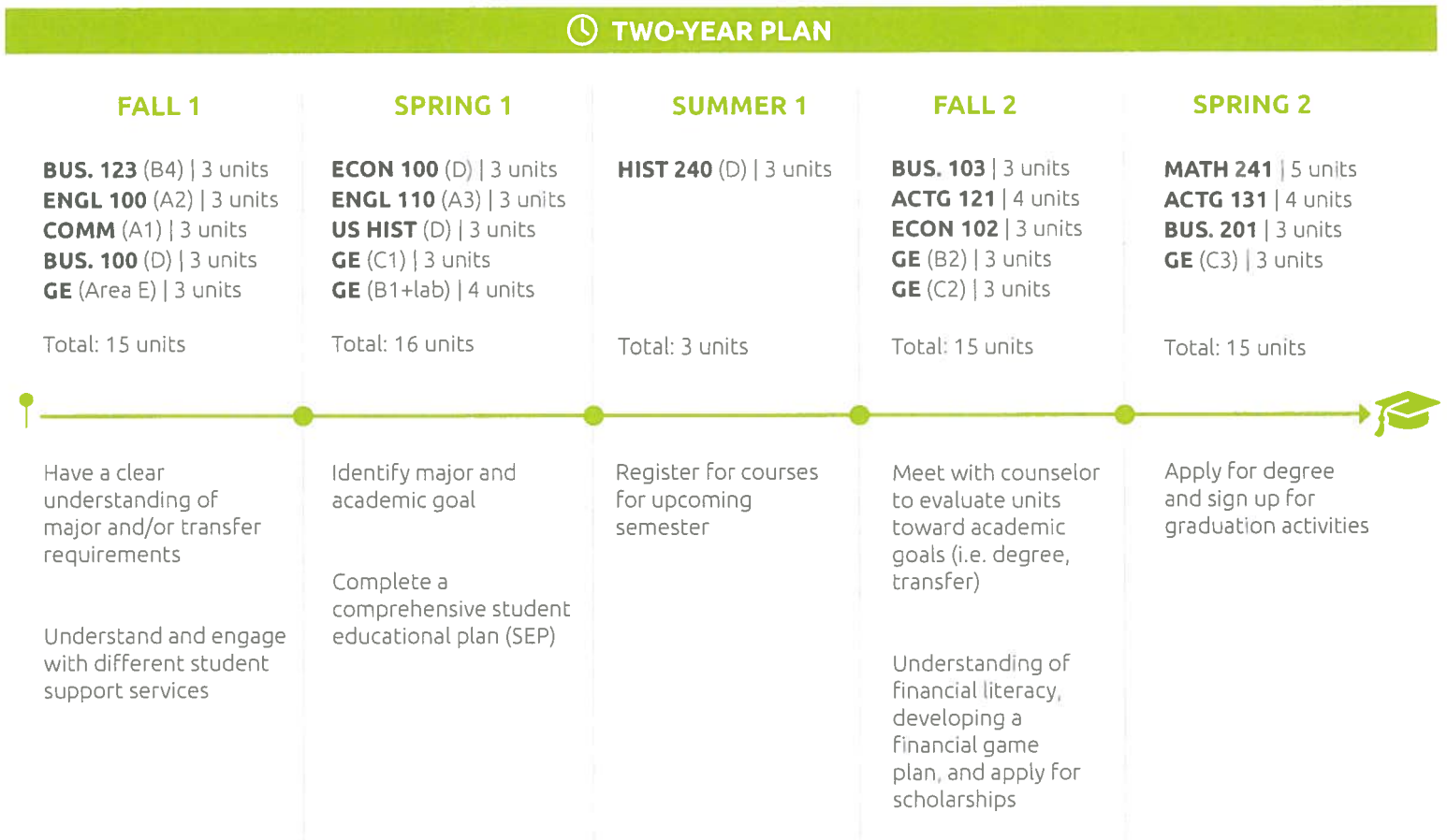
## Advantages of Guided Pathways

We're designing guided pathways to integrate student services and instruction, creating a cohesive student experience that facilitates goal completion. Guided Pathways:

- Structure similar majors into academic Meta Majors that share learning commons
- Are a tool to help students see the path to completion
- Provide a means to monitor progress and activate interventions along the way
- Calculate impact on graduation timing if a student strays off their guided path
- Do NOT replace a student educational plan and students still need to meet with their counselors

## What does a Guided Pathway look like? Here's an example.

SKYLINE COLLEGE | GUIDED PATHWAY | **AA-T BUSINESS ADMINISTRATION**



SKYLINE COLLEGE | META-MAJOR

**Management, Business & Entrepreneurship**