

Administration of Justice

Comprehensive Program Review 2024

Administration of Justice

Administration of Justice is a 24-unit degree and certificate program that provides students with a solid educational foundation in criminal justice studies, allowing students an opportunity to *explore* the varied aspects of criminal justice, *discover* their passion for an exciting and rewarding career, and *achieve* their academic and vocational dreams! Do **YOU** have what it takes? Strong interpersonal and critical thinking skills, good communication and organization abilities, knowledge, ambition, ethics and integrity, problem-solver, and a strong desire to serve the community. These are some of the attributes that employers look for in candidates, and our program helps to prepare you. Earn your Associate Degree, Transfer Degree, or Certificate of Achievement for the head start you need. Your first step to **SUCCESS!**

Meet Our Staff

Steve Aurilio, ADMJ Program Coordinator
aurilios@smccd.edu

Kevin Phipps, ADMJ Instructor
phippsk@smccd.edu



CPR Report

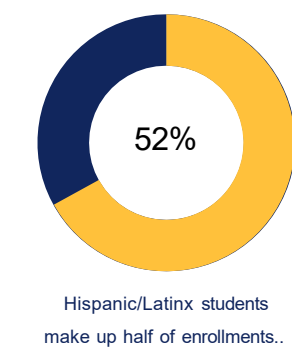
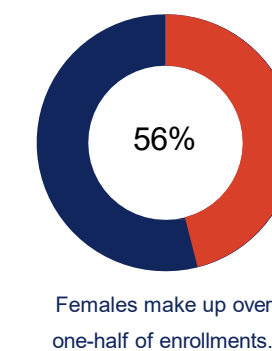
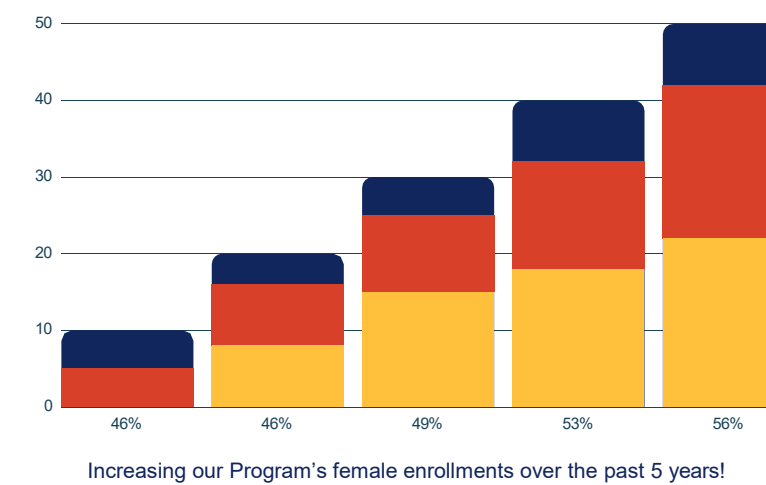


<https://tinyurl.com/ADMJ24>

Follow the QR code or link above for more details on program highlights, successes, and goals.

Achievement Highlights

- ★ Increased female enrollments by 10%, from 46% to 56%.
- ★ Increased Hispanic/Latinx enrollments by 5%, from 47% to 52%.
- ★ Courses offered in face-to-face and online (asynchronous) modalities.
- ★ Courses transfer to CSU, with pathway to CSU-EB. Six courses transfer to UC.
- ★ Program leads to Certificate of Achievement, A.S. Degree, and A.S. Transfer Degree.
- ★ Program meets AB 458 “Modern Policing Degree” req. for entry-level peace officers.
- ★ Program will award “Credit for Prior Learning” work credits, shaving off up to one year.
- ★ 18 students awarded Daly City PD PAL-Ed Scholarships amounting to \$26,500 so far.



ADMJ Future Goals

- ❖ Increase Program's student success rates by 2% for Hispanic/Latinx enrollments.
- ❖ Increase Program's student success rates by 2% for Asian American enrollments.
- ❖ Increase students enrollments in Program courses showing lower enrollments.
- ❖ Strengthen our partnerships and alliances with College groups and programs.
- ❖ Facilitate access and completion with a four-semester Program Modality Plan.
- ❖ Work with the Articulation Office on building our Program's "pipeline" to CSU.
- ❖ Upgrade Program's web page to increase visibility and reflect recent changes.

New Focus Areas for Program Improvement

- Monitor AB 458 legislation that requires a four-year degree, or a two-year “Modern Policing Degree”, to become employed as a peace officer in California (effective January 1, 2028.)
- Prepare Program for awarding “Credit for Prior Learning” units for military, veterans, police officers, and others industry that will apply toward degree goals (up to 30 units of credit.)
- Bolster Program enrollments that decreased after the Covid-19 pandemic struck in 2020.
- Transition the Program to ZTC (Zero Textbook Cost) and OER (Open Education Resources.)

Barbering, Cosmetology, & Esthetics

Comprehensive Program Review 2024

Barbering, Cosmetology and Esthetics

Our mission is to inspire confidence by enhancing the education and training of future professionals in the art and sciences of Barbering, Cosmetology and Esthetics. The BCE programs prepare students to succeed in obtaining professional licenses in the fields of Barbering, Cosmetology and Esthetics. Hands-on applied training in our salon, spa and barbershop prepares students to build their own businesses as professionals.

<https://skylinecollege.edu/cosmetology/>



Names of Contacts

- Cassidy Ryan, Faculty Coordinator
 - ryanc@smccd.edu
- Lynsey Hemstreet, Faculty
 - hemstreetl@smccd.edu
- Tammy Calderon, Faculty
 - calderont@smccd.edu
- Regina Mitchell, Faculty
 - mitchellr@smccd.edu
- Elias Lopez, Faculty
 - lopezelias@smccd.edu

CPR Report



<https://tinyurl.com/BARBCOSMESTI24>

Follow the QR code or link above for more details on program highlights, successes, and goals.

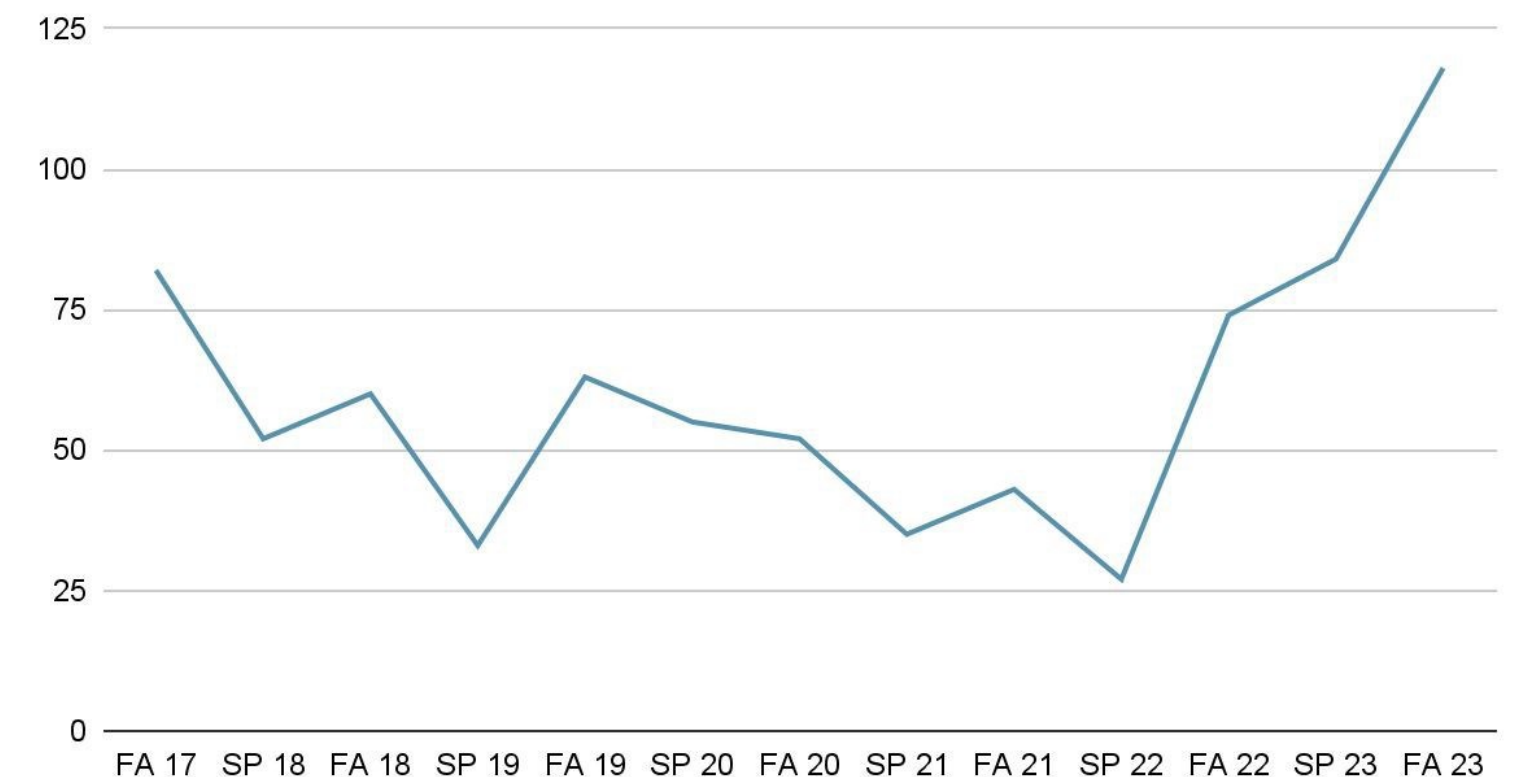
Future Goals

1. Streamline program offerings to meet collective needs of students.
2. Reevaluate the role of coordinator to determine best department support structure.
3. Create opportunities for instructor training, retention and onboarding.
4. Reevaluate the enrollment process to ensure opportunities for all students.

Achievement Highlights

- 2022 Exemplary Program of the Year award, Academic Senate, Skyline College
- Launch of the first barbering program at a community college in Northern California.
- Launch of crossover programs (cosmetology to esthetician or barber).
- Fully hybrid course offerings.
- Enrollment growth. BCE has grown from 90 students at our last CPR to 240 students per semester (see chart below).

New BCE Student Enrollments (2017-2023)



Additional Significant Information

The department has successfully implemented the annual capstone project for students completing the Barbering, Cosmetology & Esthetic Programs.

We hope to see you at our showcase!
Monday May 20th, 4-5pm



CHEMISTRY COMPREHENSIVE PROGRAM REVIEW 2024

The program focuses on teaching proper scientific reporting techniques and using chemical experimentation to test hypotheses and analyze results. The department offers a variety of courses that fulfill General Education requirements for different majors. Laboratory work is an integral part of most courses, focusing on experimental techniques, analysis, and interpretation of findings.

- A.J. Bates
 - batesa@smccd.edu
- Joaquin Rivera
 - rivera@smccd.edu
- Susanne Schubert
 - schuberts@smccd.edu

ACHIEVEMENT HIGHLIGHTS

- Chemistry Jam
- Pandemic Response: Lab Kits & On-campus Lab Instruction
- Chemistry Week/ Chemistry Club
- NASA SJSU Collaboration
- Strong peer instructure support system in collaboration with STEM Center
- uSOAR

CPR REPORT



<https://tinyurl.com/CHEMCPR24>

Follow the QR code or link above for more details on program highlights, successes, and goals.



Equity in support: Create a supplemental Math course as a late start for CHEM 210 to support and build student math skills.

Equity in success: The chemistry department will work together with SJSU and Blue Marble Space to create a dedicated internship program for community college students.

Equity in access: Maintain and update an Up-to-date Laboratory with fully functional equipment and necessary supplies to prepare students for upper-division chemistry courses and the chemistry workforce.

AB 705: Updated all course outlines to reflect the changes in prerequisite courses.

AB 1111: Organic Chemistry courses vary in number from the other colleges in the district. Organic Chemistry is offered as separate lab and lecture courses at Skyline College. This is very helpful to our students and gives them flexibility in their course of study and class timing.



KINESIOLOGY COMPREHENSIVE PROGRAM REVIEW 2024

The Kinesiology program strives to educate students about the lasting benefits of physical activity. It explores how exercise, movement, and sports contribute to human well-being and happiness. By studying, anatomy, physiology, biomechanics and psychology, students learn how the body interacts and flourishes through meaningful physical activity experiences.

<https://skylinecollege.edu/kinesiology/>

CPR REPORT



<https://tinyurl.com/KINECPR24>

Follow the QR code or link above for more details on program highlights, successes, and goals.

- **Resilient Response to Challenges:** Despite the obstacles posed by the COVID-19 pandemic, the Kinesiology department demonstrated resilience and dedication, successfully transitioning fitness-based courses back to face-to-face formats, resulting in significantly higher success rates.
- **Commitment to Student Success:** The Kinesiology AA-T program showcases consistent performance, with initiatives focused on enhancing student learning, such as curriculum adaptations and the reintroduction of the Physical Education Evaluation Program, reinforcing the department's dedication to equitable access and inclusive education.
- **Adaptability and Flexibility:** Effective management of staffing changes and program adjustments, including the addition of Varsity Women's Wrestling and professional development initiatives, underscore the department's adaptability and responsiveness to evolving needs and best practices.
- **Continuous Improvement:** The Kinesiology program's commitment to continuous improvement is evident through its assessment practices and forward-thinking approach, positioning it for continued growth and excellence in alignment with district and institutional goals.

- **Chris Watters**
 - wattersc@smccd.edu
- **Kevin Corsiglia**
 - corsigliak@smccd.edu
- **Mike Sharabi**
 - sharabim@smccd.edu

AB 928 IMPACTS

- **Impact of Exclusion on Various Disciplines:** Excluding lifelong learning and self-development courses could affect diverse fields, including kinesiology, social sciences, humanities, communications, nutrition, counseling, and health education, potentially limiting educational breadth and student engagement.
- **Health Disparities and Success Gaps:** The elimination of Area E under AB 928 may exacerbate health disparities and widen success gaps among disproportionately impacted students, highlighting the need for equitable access to self-development courses to address holistic well-being and academic achievement.
- **Importance of Retaining Self-Development Courses:** The Kinesiology Department advocates for the retention of "Self Development" courses as part of SMCCCD's local graduation requirement, recognizing their vital role in fostering personal growth, well-being, and academic success for students across disciplines.



FUTURE GOALS

- **Construct Campus Fitness Center:** Our goal is the successful construction of a campus fitness center, aligning with district and campus values of equity and social justice. Providing access to evidence-based, curriculum-integrated classes will bridge health outcome disparities across social, ethnic, and economic boundaries, ensuring all students benefit from kinesthetic learning.
- **Invest in Updated Fitness Equipment:** Enhancing our fitness facility with state-of-the-art equipment is imperative for promoting physical health and well-being among our college community. By offering modern and diverse options, we cater to various fitness needs, attract more students, ensure safety, and promote equity in access to wellness resources.



REMOTE FITNESS & ASSESSMENT

- **Challenges in Remote Fitness Assessment:** Conducting fitness assessments in a remote learning environment poses significant difficulties. Limited access to specialized equipment, inability to monitor technique closely, and varying environmental factors make accurate evaluation challenging. Adapting assessment methods to ensure fairness and validity requires innovative solutions and careful consideration.

NETWORK ENGINEERING TECHNOLOGY (NETX)

Comprehensive Program Review 2024

Tell me and I forget. Teach me and I remember. Involve me and I learn.

- Ben Franklin

Program Overview

The Network Engineering (NETX) program provides essential and advanced career technical education in the field of Information Technology, covering end-user support, network infrastructure technology, system administration in cybersecurity, data center operations, and cloud solutions. Our pedagogy incorporates engineering principles and industry standards for design, implementation, testing, and documentation. Our courses cover a wide range of topics including copper and fiber cabling, WIFI technology, network switches and routers, network operating systems, protocol analyzers, security appliances, data center infrastructure, and vendor cloud products. Upon completion a student can earn a certificate, A.S. degree or transfer to a four-year college.

Check out our website: <https://skylinecollege.edu/networkengineeringtech/>

Program Contacts

- Norman Del Prado delpradon@smccd.edu
- Radni Pirehabdollahkandi pirehabdollahkandir@smccd.edu
- Shruti Ranade ranades@smccd.edu

CPR Report



<https://tinyurl.com/NETXCPR24>

Follow the QR code or link above for more details on program highlights, successes, and goals.

Future Goals

- Update and add courses and certificates to meet workforce demands.
- Maintain network lab equipment and software simulation technology.
- Develop robust internship programs.
- Improve classroom environment, including air circulation, temperature control, and addressing any leakage issues.
- Request additional classroom and storage space.
- Continue with our successful strategy.
 - ✓ Industry Focus – IT Faculty, Best Practices, Use Case
 - ✓ Activity Based Learning – Use case on industry equipment/software
 - ✓ Outreach – Collaborating with Industry, VA, SWFD

Industry Focus

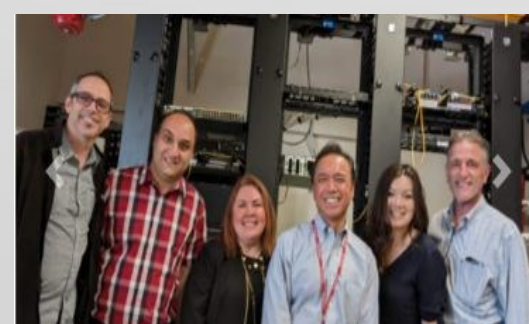
- Faculty – 100% IT work experience, Industry and/or Vendor Certified, Use team activities and projects
- Course Content & Network Lab – Follow Industry Guidelines and Standards – CISCO, IEEE, ISC2, FOA
- Advisory Committee – IT Private & Public Sector, NETX graduates in Industry
- Labor Market Forecast – Computer/Network 7% to 14% vs Other 3%



Use case of industry practice



Demonstrating network infrastructure design



NETX and Equinix Internship Program

Program Highlights

- Launched three new courses**
 - ✓ Cybersecurity Infrastructure, Cloud Infrastructure Essential & Data Center Infrastructure
- Classroom/network labs upgraded, consolidated and relocated**
 - ✓ Upgraded network infrastructure for data center, cloud solutions, cybersecurity, 3 to 2 class/lab
- Internship Program**
 - ✓ Equinix (Fortune 500 Co.) – In 2022 yearly program with 5-10 internships. 6 student F/T employment
 - ✓ SF Public Utilities Commission – Ad hoc internship program with 5 interns to 5 F/T (support and analyst)
- Outreach Program with Strategic Partnerships & Work Force Development**
 - ✓ Dual Enrollment – Capuchino High School from 2017 to present
 - ✓ Adult Program – Westmoor and Capuchino High Schools from 2022 to present
- Industry Certification**
 - ✓ Fiber Optic Association – www.foa.org Certified, Two adjunct faculty, 2 courses, network/lab classroom
 - ✓ Since 2022, 25+ students passed CFOT
- Success and Retention**
 - ✓ NETX success is 84.9% to college 76.3% , NETX retention is 92.4% to college 92.1%
- Military & Veterans Students**
 - ✓ In 2023, NETX 14% to Skyline 4%, Two adjunct faculty Veterans actively work with Skyline VA
- Gender Comparison**
 - ✓ NETX – 15.3% female students to Industry’s network engineers of 9.4%
 - ✓ Adjunct Faculty – 2 female NETX graduates with BS degree, IT experience, certification
 - ✓ Increase of 75% in female students

Employment

- ✓ New Jobs 60-70%, Promotion/Bonus 10-15%
- ✓ Employers: Equinix, SF PUC, Stanford Hospital/University, Genentech, VA Hospital, Chevron, Bay Area Small Business

Industry Certifications

- ✓ Fiber Optics – CFOT/CPCT
- ✓ COMPTIA – A+, Network+
- ✓ Cisco - CCNA

College Transfer

- ✓ San Francisco SU
- ✓ San Jose SU
- ✓ East Bay SU

Student Profile

- ✓ 75% > 23 years of age
- ✓ 45% have an AA/BS
- ✓ 65% Part Time (<12 Units)
- ✓ 80% Evening Program
- ✓ 55% No IT Experience
- ✓ 60% Career and Job Improvement



Student Testimonials



OUTREACH & STUDENT RECRUITMENT CPR 2024



The Outreach Office supports Skyline College's new student recruitment by providing quality services to prospective students and members of the community. These services include: presentations, application workshops, guided tours, registration assistance, onboarding support and participation in on- and off-campus recruitment events. The outreach office has established partnerships among local high schools and community-based organizations providing college readiness ensuring prospective students are knowledgeable and prepared for their educational journey at Skyline College.

Website: <https://skylinecollege.edu/outreach/> Instagram: <https://www.instagram.com/skylinecollegeoutreach/>

Jeremy Evangelista-Ramos,
College Recruiter

Evangelistaj@smccd.edu

Will Minnich,
Dean of Enrollment Services

Minnichw@smccd.edu



CPR REPORT



<https://tinyurl.com/OUTR24>

Follow the QR code or link above for more details on program highlights, successes, and goals.

The outreach department has expanded its recruitment efforts with the use of data and technology. Salesforces offers the opportunity to respond to general inquiries through a prospective student database and provide follow-up in a timely manner; deepening the connections between prospective students and programs and services. Outreach utilizes Salesforce to engage and support recent applicants through successful matriculation with a clearer understanding on where individuals may be in the enrollment process. These efforts are critical during the interest/discovery phase of those seeking career and educational attainment at Skyline College. Since the creation of the outreach office, the program continues to collaborate with a number of instructional and students services departments across campus to promote its' respective areas. Areas include but are not limited to: CTE Pathways, Promise/TRiO/EOPS, transfer and explorers and learning communities. Many of the outreach events reverted back in-person both on- and off-campus and have had a positive impact in engaging with prospective and incoming students.

The outreach student ambassador program doubled in size over the last year with the use of enrollment and retention funding increasing its' ability to support ongoing and new recruitment activities. These efforts focused in student populations that experienced the steepest enrollment declines due to the pandemic. Campus ambassadors directly address students using their own voices which is critical to developing rapport and trust among students and highly encouraging enrollment.

Watch the outreach team in action!



POST SHARED ON JUL 14, 2022
BY DCTEENS



REEL SHARED ON JUL 6, 2023
BY DCTEENS



REEL SHARED ON OCT 12, 2023
BY SKYLINECOLLEGEOUTREACH

- Outreach continues to collaborate with a multitude of programs and departments across campus to increase outreach and enrollment. The College Recruiter is heavily involved in spaces focusing on strategic marketing campaigns and recruitment activities through quantitative and qualitative research and analysis. In addition to K-12, the next few years will focus on adult students between the ages of 25-50, Dual Enrollment completers and disproportionately impacted students groups. Part of this work is identifying potential barriers and motivations to first-time enrollment in community college.
- Increasing its' use with meaningful data allows the outreach office to begin tracking and accessing activities that generate positive and negative responses/outcomes. Outreach can better measure the effectiveness of its' efforts and current service offerings to meet institutional enrollment goals (i.e. Education Master Plan, Student Equity Plan).
- Expanding the outreach team beyond one full-time classified professional and part-time campus ambassadors gives the opportunity for richer collaborations on- and off-campus; this encompasses stronger partnerships among local high schools and college access programs. Additional conversations and training will occur to ensure a coordinated approach as we implement new recruitment activities while maintaining ongoing efforts.

- **Career Technical Education "CTE Day"** – Annual event showcasing Skyline's CTE Pathways with local high school students.
- **Discover Days** – A culminating experience for high school students in programs such as Herman@s and Kapatiran to shadow college courses and opportunities at Skyline through learning communities.
- **Connect 2 College** – A campus-wide open house highlighting information (academic and student support programs) for first-time students and their families.
- **Priority Enrollment Program "PEP" Days** – One-day onboarding event supporting first-time students through successful matriculation and connections to programs and services to receive priority registration for upcoming term(s).
- **Counseling Liaison Program** – Intentional enrollment/onboarding program in partnership with local high schools and the counseling departments supporting seniors through successful matriculation to receive priority registration for upcoming term(s).

PARALEGAL STUDIES COMPREHENSIVE PROGRAM REVIEW 2024

Our ABA-approved program empowers students to embrace the role of a legal support professional and guides them toward opportunities to make meaningful contributions across the spectrum of private enterprises, public institutions, and nonprofit sectors.

<https://skylinecollege.edu/paralegal/>

- [Jesse W. Raskin](#)
- [Danni Redding Lapuz](#), Dean

Program graduates are achieving their goals of transfer to four-year institutions, enrollment in law school, and entry into legal wage jobs in the Bay Area.

CPR REPORT



<https://tinyurl.com/LEGLCPR24>

Follow the QR code or link above for more details on program highlights, successes, and goals.

- American Bar Association Approved
- 100% Online Degree and Certificate Programs
 - Enrollment above Pre-COVID Levels
 - 88% of Students are Achieving PSLOs

The Paralegal Program seeks to increase enrollment while continuing to provide a learning experience characterized by its academic rigor, inclusivity, and strong support system for students.

INCREASED GRADUATION RATES

Students have achieved a 275% increase in certificates awarded from 2018-2019 to 2022-2023 and 500% increase in certificates awarded from 2018-2019 to 2022-23.

Promise Scholars Program (PSP)

Comprehensive Program Review 2024



Promise Scholars Program (PSP)

The Promise Scholars Program (PSP) at Skyline College is a comprehensive student support program that provides up to three years of intentional counseling, wrap-around financial support, and academic benefits. It has served approximately over 2,000 students to date since launching in Fall 2018. We accept and serve college students with 15 units or fewer, who can commit to full-time study and intend to earn an associate's degree, certificate, and/or transfer to a 4-year college/university. <https://skylinecollege.edu/promise/>

Names of Contacts

- Dr. Nate Nevado
 - nevadon@smccd.edu
- Sha'Kuana Ona
 - onas@smccd.edu
- Albin Lee
 - leealbin@smccd.edu
- Kim Davalos
 - davalosk@smccd.edu
- Rocio Aguilar Pedroza
 - aguilarpedrozar@smccd.edu
- Adriana Johnston
 - johnstona@smccd.edu
- Mandy Lucas
 - lucasm@smccd.edu

CPR Report



<https://tinyurl.com/PSPCPR24>

Follow the QR code or link above for more details on program highlights, successes, and goals.

Future Goals

- Build and strengthen partnerships with PSP-blocked course instructional faculty, SSP, and the learning commons to reduce the percentage of students moving into academic probation (I & II) and dismissal.
- Continued collaboration with EOPS, TRiO, and Learning Communities to streamline onboarding and provide clarity on support and benefits offered.
- Collaborate with SPWD and the Explorers Program to rethink career milestones and support.
- Collaboration with Guided Pathways and General Counseling to envision a part-time student completion program
- Implementation of PACS (Prepare, Aware, Care, Share) pedagogical framework to address areas of growth and equity gaps identified

Achievement Highlights

- PSP has doubled or tripled the 2-year and 3-year graduation rates compared to SMCCD FTFT students – meeting and/or exceeding persistence rate benchmarks.
- Scale up through Alliance: Intentional collaboration with EOPS (Educational Opportunity Program & Services) & TRiO
- Highlights:
 - Campus Collaborations: (UCC, VRC, SPWD, Athletics, LCs, SparkPoint, EAC, TC & Outreach, etc.)
 - COUN 100 blocked courses: Focus on STEM, Men of Color, & Student Success Program
 - CRER 137 blocked courses: Career Launch Academy implementation
 - Promise Podcast
 - Black and Brown Scholars
 - Transfer Conference

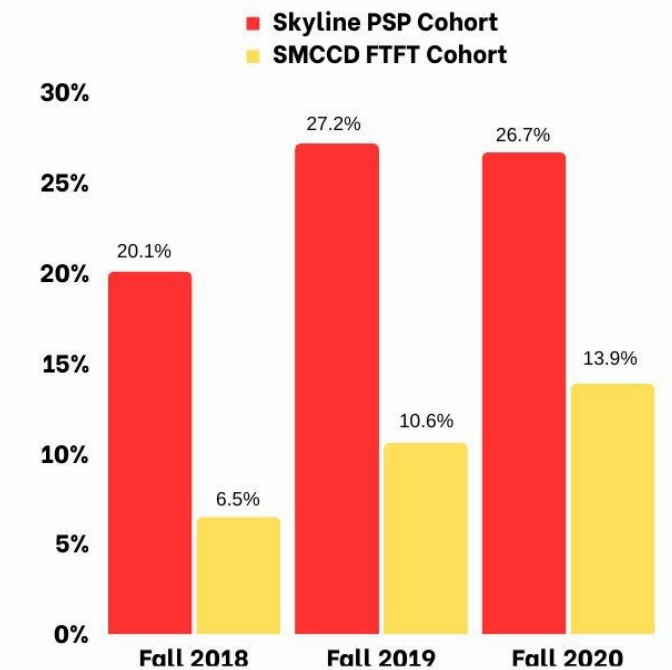
Additional Significant Information

- PSP caseloads range from 90 to 130+ for part-time and full-time counseling faculty respectively.
- The number of counseling appointments (appt) and Promise engagement opportunities (PEOs) are determined based on counselors' assessment for each student after their first semester. All students are considered high support in their first semester. The following are samples of the main support levels: **High**: 4 appt, 2 PEOs, **Medium**: 2 appts, 2 PEOs, **Low**: 2 appt, optional PEOs, **Transfer**: 2 appt, 1 transfer PEO, **Transfer + TAG**: TAG appt + 1 appt, 1 Transfer PEO
- Graduation and persistence rates demonstrate effectiveness of PSP scholar engagement with program, in Fall 2023, 71% (720 of 1017) students completed all requirements.

Degrees Only

Two Year Graduation Rates (Unduplicated Degrees) Fall 2018-Fall 2020 Cohorts

NOTE: These represent unduplicated counts and percentages are based off of original cohort numbers, as determined as census of first term. If student earned a degree and certificate, or multiple degrees, they are only counted once, with the highest degree counted.

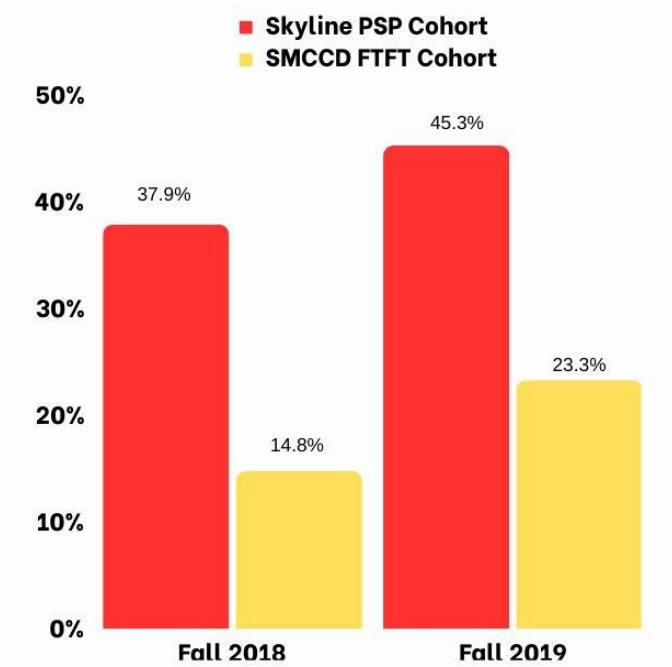


Data Source: PRIE SAP Promise Program Review Report (Accessed November 2023)

Degrees Only

Three Year Graduation Rates (Unduplicated Degrees) Fall 2018 and Fall 2019 Cohorts

NOTE: These represent unduplicated counts and percentages are based off of original cohort numbers, as determined as census of first term. If student earned a degree and certificate, or multiple degrees, they are only counted once, with the highest degree counted.



Data Source: PRIE SAP Promise Program Review Report (Accessed November 2023)



Sociology (AA-T)

CPR 2024



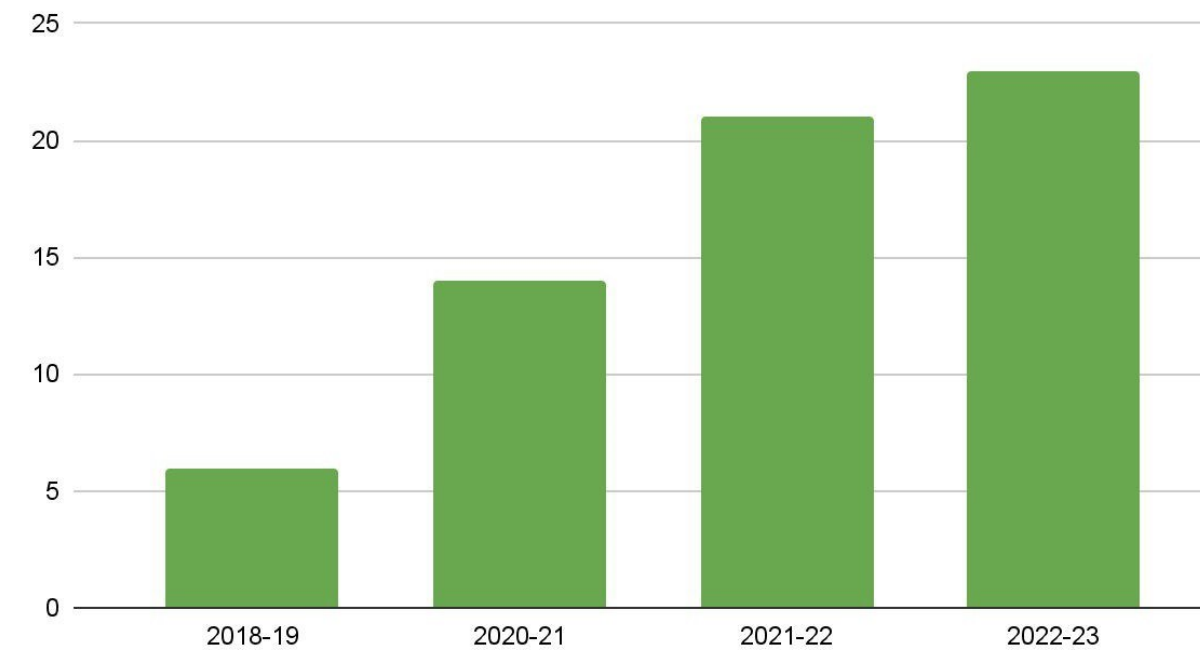
The Sociology department equips students with the **Sociological Imagination** that critically connects everyday personal experiences to the larger social structure and the historical trajectory that constructed the social system. Politically, the Sociological Imagination is an antidote to individualistic liberalism; we foster a **structural understanding of everyday life** using rigorous **Sociological methods** to create agents of change for a more just society,

We offer critical GE courses, many applicable to other degrees

- Introduction to Sociology (ADJ, PSYCH)
- Social Problems (SJS)
- Sociological Research Methods (ANTH)
- Sociology of Race and Ethnicity (SJS)
- Sociology of Sex and Gender (SJS)
- Sociology of Courtship, Marriage and Family (PSYCH)
- Intersectionality and Citizenship (RC)



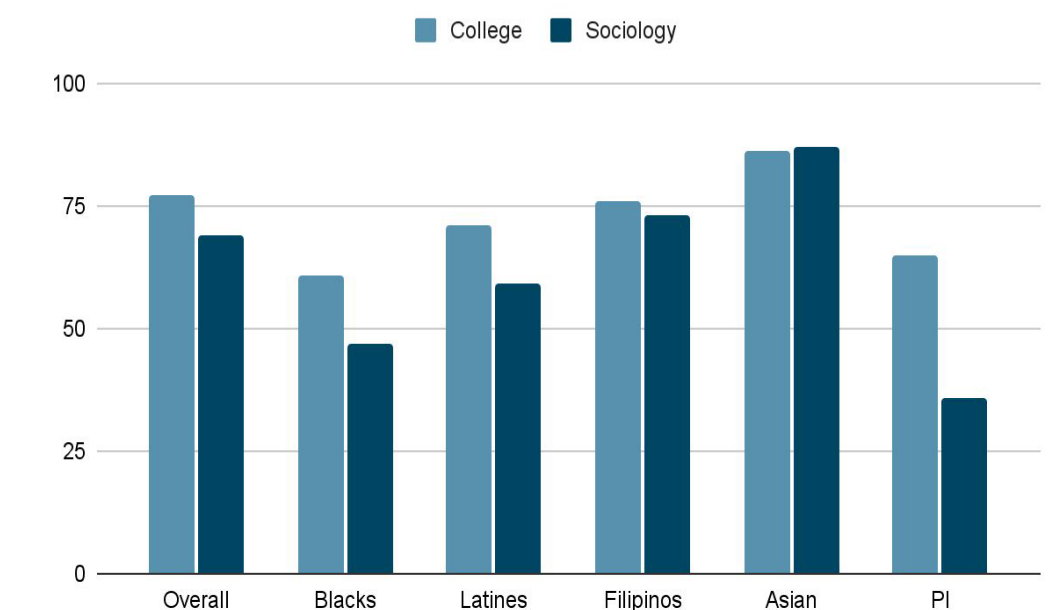
of Sociology degrees issued



Since we created Sociology AA-T, we have observed a steady growth in the number of students completing the Sociology transfer degree. The trend continued despite the College-wide enrollment dip in 2021-2023. The student survey shows that 98% of students are satisfied with sociology classes, with 75% saying they exceeded their expectations.

Blacks, Latines, and Pacific Islanders have lower success rates, compared to the College numbers, while Filipinos and Asians are at par. For Pacific Islanders in particular, the success rate is alarmingly low, at 36%. Since we have a severe underrepresentation of PIs in our enrollment, this is both an access and success issue. We also observed that Latino and Filipino male identifying students have extra struggle.

Points scored



Black Panther Party Chicago Chapter Chairman Fred Hampton once said, "Theory without practice ain't shit." Action-Theory synthesis is the key pedagogical principle in our program.

Analysis

Consciousness

Action as a social change agent

Reflection on action-theory synthesis

Repeat

Future Goals

- Bring the success rates of African Americans, Latine, and PI students at par with the College average of 77% (year 2022-23) in seven years.
- Increase the representation of PI and African American students at par or higher with the % enrollment of these two groups in College, particularly male-identifying students.



WELLNESS

COMPREHENSIVE PROGRAM REVIEW 2024

Currently, Wellness is transitioning being re-branded pivoting focus from Massage Therapy to Wellness: Integrative Health, Wellness & Well-Being course/certificate offerings.

Our unique certificates reflect many facets inherent within these various interdisciplinary and multicultural disciplines. Designed to support innovation, critical thinking, diversity and an entrepreneurial spirit for entry level knowledge, career change, addition to current licensure/certification, enhancing skill sets, maintaining credentials in a variety of professions.

Website URL <https://skylinecollege.edu/wellness/>

Michael Kane
kanem@smccd.edu

Dr. Ronda Wimmer
wimmerr@smccd.edu

CPR REPORT



<https://tinyurl.com/WELLCPR24>

Follow the QR code or link above for more details on program highlights, successes, and goals.

Massage Therapy Certificate: Success rates: Core courses: 90%, Students successful: 96.8%; Overall all courses: 79.3%, Students successful 92.3% . **National Exam pass rates:** Skyline students 84.6% compared to national pass rates of 72.9%. **School program rankings:** top three CAMTC schools, #7 regionally and #17 nationally. **Successfully completed teach-out** 2021/22.

Wellness Transition: We have started with four new certificates, others still in development: Meditation & Mindfulness, Aromatherapy: Essential Oils for Health & Well-Being, Sports Medicine Integrative Therapies & Rehabilitation, and Integrative Health & Wellness.

NEW CERTIFICATES



Get started in Health & Wellness

Learn more about our current and upcoming certificate programs.

Integrative Health & Wellness (20-24 units)
Integrated/holistic health, a multidisciplinary field, emphasizes the interconnectedness of physical, emotional, intellectual, and spiritual well-being. Explore diverse healing traditions and address historical, philosophical, and practical principles to bridge educational gaps and promote self-healing within culturally diverse populations.

Sports Medicine Integrative Therapies & Rehabilitation (16-17 units)
Our Sports Medicine Integrative Therapies and Rehabilitation Certificate is designed for entry-level students and professionals alike who are interested in injury prevention, integrative therapies, sports medicine, rehabilitation and other related professions.

Meditation & Mindfulness (9 units)
Explore various types and practices of meditation, their history, principles of practice in both traditional and contemporary medicine, as well as associated research. The practice of meditation and skills learned can be used to facilitate meditation personally, individually, with a group, in a class and/or within the community.

Aromatherapy: Essential Oils for Health & Well-Being (7 units)
Introduction to safe and effective use of essential oils for health and wellness. Explore the historical and traditional uses of aromatherapy, safety and toxicity issues, therapeutic benefits, scientific evidence regarding their therapeutic qualities, chemical classifications, blending and an overview of business, ethics and laws.

Get more info here:
bit.ly/skylinewellness



Skyline College
Health & Wellness

1. New courses and certificates still in development.
2. New department the main goal is increasing awareness of our certificate programs and course offerings.
3. Increase enrollments in general, including male student population and students of color.
4. Continue to support inclusion and diversity.
5. Hiring additional adjunct faculty.

1. Collaborating with SFSU creating a bridge with their Holistic Health emphasis.
2. Unique curriculum within a profession that is truly interdisciplinary and addressing multicultural perspectives as well as counters social injustice with critical issues of colonialism appropriating Indigenous authority, of misrepresentation, and of using western cultural constructs that marginalize Indigenous and Eastern ways of knowing within various traditional healing/medical systems.
3. Connected with counselors to educate, guide and promote our new Wellness certificates.