



CURRICULUM



33

Associate Degrees



29

Associate Degrees for Transfer



01

Bachelor of Science Degree



47

Certificates



Honors Transfer Program



Learning Communities

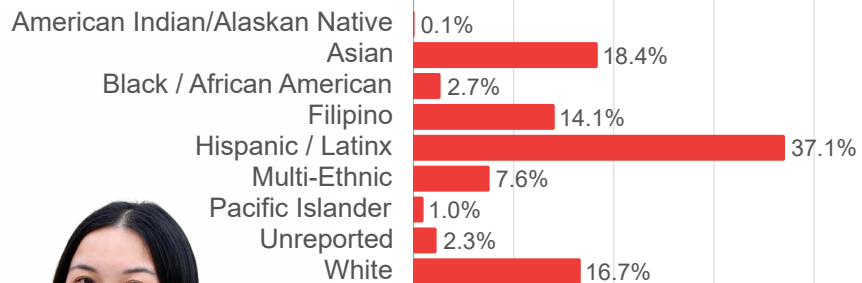
- Biology & Chemistry Scholars
- CIPHER (Hip Hop)
- Early Childhood Apprenticeship Program
- Engineering & Technology Scholars
- First Year Experience
- Kababayan
- Puente
- Umoja-ASTEP



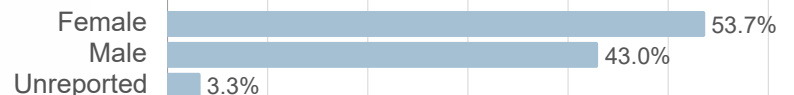
Skyline College is committed to developing culturally rich and globally informed educational opportunities for an annual population of over 16,000 students. Students can choose from over 100 degree and certificate programs to achieve their educational goals in an affordable and supportive environment. Skyline College students are able to transfer to a wide range of public and private colleges, including UC Berkeley, UCLA, UC Davis, and San Francisco State University, making Skyline College a top destination for students working to transfer to a four-year college or university. Key Transfer Admissions Guarantee (TAG Program) agreements offer students guaranteed admission to one of six UC campuses, including Davis, Irvine, Merced, Riverside, Santa Barbara, and Santa Cruz.

FALL 2025 STUDENT DEMOGRAPHICS

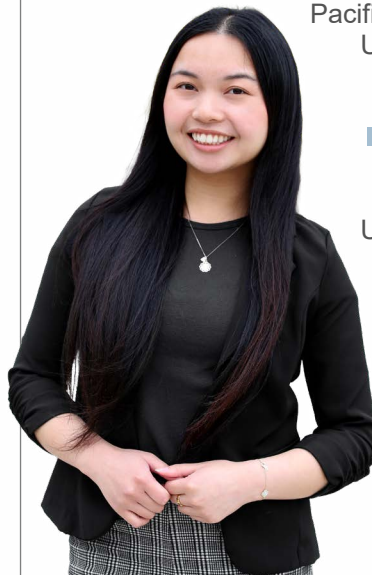
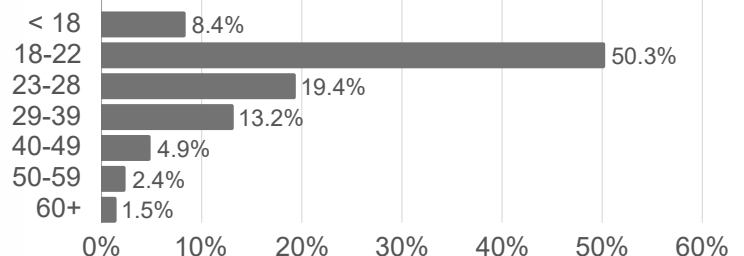
ETHNICITY



GENDER



AGE



FALL 2025 ENROLLMENT



9,204

Total Credit Students



1,241

First-Time Students



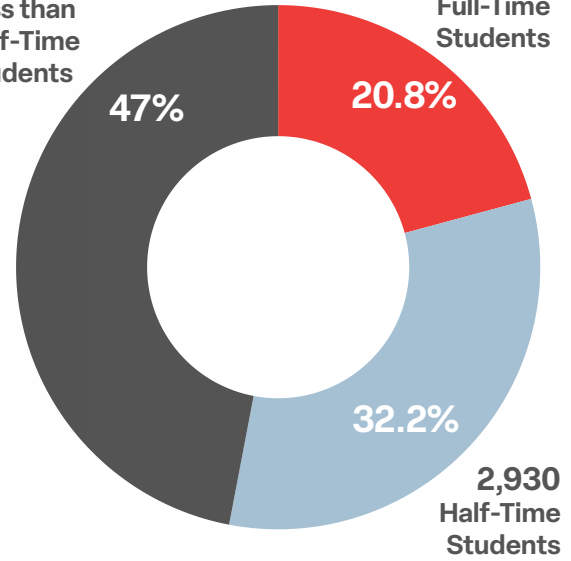
222

International Students



4,418
Less than
Half-Time
Students

1,856
Full-Time
Students



HIGHLIGHTS OF FALL 2025 ENROLLMENT

\$11.2M Financial Aid Awarded (2023/2024)

1,164 Promise Scholars currently enrolled

895 Class sections offered

1,589 High school students (*including Middle College, Concurrent, and Dual Enrollment*)

423 Veteran students

100 Foster youth students

30 Students enrolled in Respiratory Care Bachelor of Science Program

60.9% On-campus/in-person classes

39.1% Online classes (synchronous included)

RESIDENCY

Daly City/Colma 2,050 **22.6%**



Other San Mateo County 1,735 **18.9%**



South San Francisco 1,304 **14.3%**



San Bruno/Millbrae 1,082 **11.7%**



San Mateo 796 **8.6%**



San Francisco 745 **8.2%**



Pacifica 685 **7.2%**

